

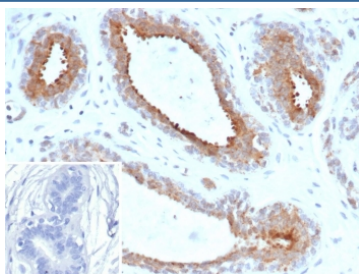
BRCA1-Associated Protein 1 Antibody / BAP1 [clone BAP1/13501R] (V5816)

Catalog No.	Formulation	Size
V5816-100UG	0.2 mg/ml in 1X PBS with 0.1 mg/ml BSA (US sourced), 0.05% sodium azide	100 ug
V5816-20UG	0.2 mg/ml in 1X PBS with 0.1 mg/ml BSA (US sourced), 0.05% sodium azide	20 ug
V5816SAF-100UG	1 mg/ml in 1X PBS; BSA free, sodium azide free	100 ug

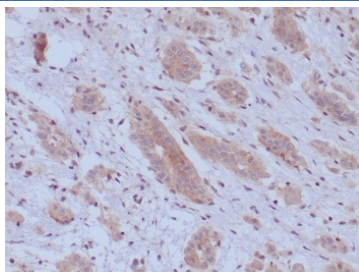
Recombinant **RABBIT MONOCLONAL**

[Bulk quote request](#)

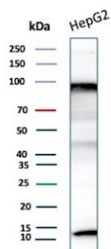
Availability	1-3 business days
Species Reactivity	Human
Format	Purified
Host	Rabbit
Clonality	Recombinant Rabbit Monoclonal
Isotype	Rabbit IgG, kappa
Clone Name	BAP1/13501R
Purity	Protein A affinity
UniProt	Q92560
Localization	Cytoplasm, Nucleus
Applications	Immunohistochemistry (FFPE) : 1-2ug/ml
Limitations	This BRCA1-Associated Protein 1 antibody is available for research use only.



IHC staining of FFPE human breast carcinoma tissue with BAP1 antibody (clone BAP1/13501R). Inset: PBS used in place of primary Ab (secondary Ab negative control).
HIER: boil tissue sections in pH 9 10mM Tris with 1mM EDTA for 20 min and allow to cool before testing.



IHC staining of FFPE human mesothelioma tissue with BAP1 antibody (clone BAP1/13501R). Inset: PBS used in place of primary Ab (secondary Ab negative control).
HIER: boil tissue sections in pH 9 10mM Tris with 1mM EDTA for 20 min and allow to cool before testing.



Western blot testing of human HepG2 cell lysate with BRCA1-Associated Protein 1 antibody (clone BAP1/13501R). Expected molecular weight: 80-100 kDa.

Description

The BAP1 gene belongs to the ubiquitin C-terminal hydrolase subfamily of de-ubiquitination enzymes that are involved in the removal of ubiquitin from proteins. The encoded enzyme binds to the breast cancer type 1 susceptibility protein (BRCA1) via the RING finger domain of the latter and acts as a tumor suppressor. In addition, the enzyme may be involved in regulation of transcription, regulation of cell cycle and growth, response to DNA damage and chromatin dynamics. Germ line mutations in this gene may be associated with tumor predisposition syndrome (TPDS), which involves increased risk of cancers including malignant mesothelioma, Uveal melanoma and cutaneous melanoma.

Application Notes

Optimal dilution of the BRCA1-Associated Protein 1 antibody should be determined by the researcher.

Immunogen

A portion of amino acids 400-729 from human BAP1 protein was used as the immunogen for the BRCA1-Associated Protein 1 antibody.

Storage

Aliquot the BRCA1-Associated Protein 1 antibody and store frozen at -20oC or colder. Avoid repeated freeze-thaw cycles.