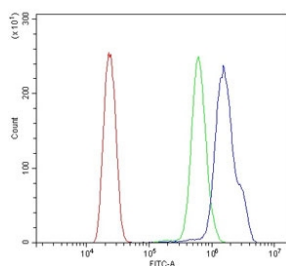


BRCA1 Antibody (RQ6358)

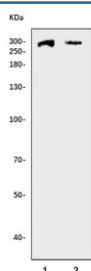
Catalog No.	Formulation	Size
RQ6358	0.5mg/ml if reconstituted with 0.2ml sterile DI water	100 ug

Bulk quote request

Availability	1-3 business days
Species Reactivity	Human
Format	Purified
Host	Rabbit
Clonality	Polyclonal (rabbit origin)
Isotype	Rabbit IgG
Purity	Antigen affinity purified
Buffer	Lyophilized from 1X PBS with 2% Trehalose
UniProt	P38398
Applications	Western Blot : 0.5-1ug/ml Flow Cytometry : 1-3ug/million cells Direct ELISA : 0.1-0.5ug/ml
Limitations	This BRCA1 antibody is available for research use only.



Flow cytometry testing of human HL60 cells with BRCA1 antibody at 1ug/million cells (blocked with goat sera); Red=cells alone, Green=isotype control, Blue= BRCA1 antibody.



Western blot testing of human 1) HeLa and 2) MCF7 (breast adenocarcinoma) cell lysate with BRCA1 antibody. Predicted molecular weight ~207 kDa, commonly observed at 207-220 kDa.

Description

BRCA1, mapped to 17q21.3, is also known as BRCC1. This gene encodes a nuclear phosphoprotein that plays a role in maintaining genomic stability, and it also acts as a tumor suppressor. The encoded protein combines with other tumor suppressors, DNA damage sensors, and signal transducers to form a large multi-subunit protein complex known as the BRCA1-associated genome surveillance complex (BASC). BRCA1 product associates with RNA polymerase II, and through the C-terminal domain, also interacts with histone deacetylase complexes. This protein thus plays a role in transcription, DNA repair of double-stranded breaks, and recombination. In addition to it, BRCA1 may normally serve as a negative regulator of mammary epithelial cell growth and that this function is compromised in breast cancer either by direct mutation or by alterations in gene expression.

Application Notes

Optimal dilution of the BRCA1 antibody should be determined by the researcher.

Immunogen

Recombinant human protein (amino acids Q1467-Y1863) was used as the immunogen for the BRCA1 antibody.

Storage

After reconstitution, the BRCA1 antibody can be stored for up to one month at 4°C. For long-term, aliquot and store at -20°C. Avoid repeated freezing and thawing.