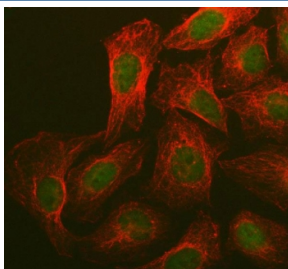


BRCA1 Antibody (R32718)

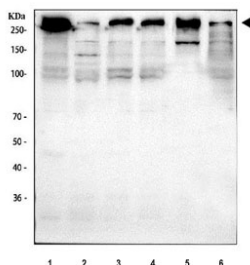
Catalog No.	Formulation	Size
R32718	0.5mg/ml if reconstituted with 0.2ml sterile DI water	100 ug

[Bulk quote request](#)

Availability	1-3 business days
Species Reactivity	Human, Mouse, Rat
Format	Antigen affinity purified
Host	Rabbit
Clonality	Polyclonal (rabbit origin)
Isotype	Rabbit IgG
Purity	Antigen affinity
Buffer	Lyophilized from 1X PBS with 2% Trehalose
UniProt	P38398
Localization	Nuclear, cytoplasmic
Applications	Western Blot : 0.5-1ug/ml Immunofluorescence : 5ug/ml
Limitations	This BRCA1 antibody is available for research use only.



BRCA1 Antibody IF. Immunofluorescent staining of FFPE human U-2 OS cells with BRCA1 antibody (green) and Beta Tubulin mAb (red). HIER: steam section in pH6 citrate buffer for 20 min.



BRCA1 Antibody Human Mouse Rat WB. Western blot testing of 1) human HeLa, 2) human MCF7, 3) human T-47D, 4) human Caco-2, 5) rat C6 and 7) mouse Neuro-2a cell lysate with BRCA1 antibody. Predicted molecular weight ~207 kDa, commonly observed at 207-220 kDa.

Description

BRCA1, mapped to 17q21.3, is also known as BRCC1. This gene encodes a nuclear phosphoprotein that plays a role in maintaining genomic stability, and it also acts as a tumor suppressor. The encoded protein combines with other tumor suppressors, DNA damage sensors, and signal transducers to form a large multi-subunit protein complex known as the BRCA1-associated genome surveillance complex (BASC). BRCA1 product associates with RNA polymerase II, and through the C-terminal domain, also interacts with histone deacetylase complexes. This protein thus plays a role in transcription, DNA repair of double-stranded breaks, and recombination. In addition to it, BRCA1 may normally serve as a negative regulator of mammary epithelial cell growth and that this function is compromised in breast cancer either by direct mutation or by alterations in gene expression.

Additional studies involving homologous recombination, hereditary cancer susceptibility, and genomic stability pathways may benefit from our [BRCA1 antibody](#) page featuring clone BRCA1/1398 with HuProt protein microarray specificity validation.

Application Notes

Optimal dilution of the BRCA1 antibody should be determined by the researcher.

Immunogen

Amino acids T1681-E1781 from the human protein were used as the immunogen for the BRCA1 antibody.

Storage

After reconstitution, the BRCA1 antibody can be stored for up to one month at 4oC. For long-term, aliquot and store at -20oC. Avoid repeated freezing and thawing.