

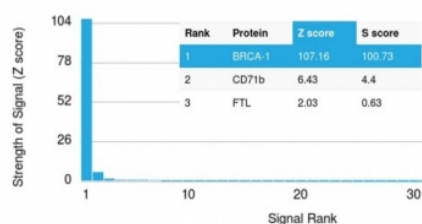
BRCA1 Antibody [clone BRCA1/1472] (V3239)

Catalog No.	Formulation	Size
V3239-100UG	0.2 mg/ml in 1X PBS with 0.1 mg/ml BSA (US sourced) and 0.05% sodium azide	100 ug
V3239-20UG	0.2 mg/ml in 1X PBS with 0.1 mg/ml BSA (US sourced) and 0.05% sodium azide	20 ug
V3239SAF-100UG	1 mg/ml in 1X PBS; BSA free, sodium azide free	100 ug

[Bulk quote request](#)

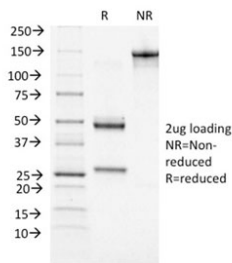
Availability	1-3 business days
Species Reactivity	Human
Format	Purified
Host	Mouse
Clonality	Monoclonal (mouse origin)
Isotype	Mouse IgG1, kappa
Clone Name	BRCA1/1472
Purity	Protein G affinity chromatography
UniProt	P38398
Localization	Nuclear, cytoplasmic
Applications	ELISA : 2-4ug/ml for coating (order BSA/sodium azide-free format)
Limitations	This BRCA1 antibody is available for research use only.

Human Protein Microarray Specificity Validation



Analysis of HuProt(TM) microarray containing more than 19,000 full-length human proteins using BRCA1 antibody (clone BRCA1/1472). These results demonstrate the foremost specificity of the BRCA1/1472 mAb.

Z- and S- score: The Z-score represents the strength of a signal that an antibody (in combination with a fluorescently-tagged anti-IgG secondary Ab) produces when binding to a particular protein on the HuProt(TM) array. Z-scores are described in units of standard deviations (SD's) above the mean value of all signals generated on that array. If the targets on the HuProt(TM) are arranged in descending order of the Z-score, the S-score is the difference (also in units of SD's) between the Z-scores. The S-score therefore represents the relative target specificity of an Ab to its intended target.



SDS-PAGE analysis of purified, BSA-free BRCA1 antibody (clone BRCA1/1472) as confirmation of integrity and purity.

Description

BRCA1 (Breast cancer type 1 susceptibility protein) is a nuclear phosphoprotein that plays a role in maintaining genomic stability, and it also acts as a tumor suppressor. The encoded protein combines with other tumor suppressors, DNA damage sensors, and signal transducers to form a large multi-subunit protein complex known as the BRCA1-associated genome surveillance complex (BASC). This gene product associates with RNA polymerase II, and through the C-terminal domain, also interacts with histone deacetylase complexes. This protein thus plays a role in transcription, DNA repair of double-stranded breaks, and recombination. Mutations in this gene are responsible for approximately 40% of inherited breast cancers and more than 80% of inherited breast and ovarian cancers. Alternative splicing plays a role in modulating the subcellular localization and physiological function of this gene.

Additional studies involving homologous recombination, hereditary cancer susceptibility, and genomic stability pathways may benefit from our [BRCA1 antibody](#) page featuring clone BRCA1/1398 with HuProt protein microarray specificity validation.

Application Notes

Optimal dilution of the BRCA1 antibody should be determined by the researcher.

Immunogen

Amino acids 445-620 were used as the immunogen for the BRCA1 antibody.

Storage

Store the BRCA1 antibody at 2-8°C (with azide) or aliquot and store at -20°C or colder (without azide).