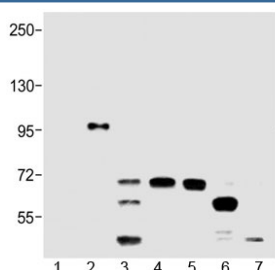


## BRAF V600E Antibody (F54150)

Catalog No.	Formulation	Size
F54150-0.2ML	In 1X PBS, pH 7.4, with 0.09% sodium azide	0.2 ml
F54150-0.05ML	In 1X PBS, pH 7.4, with 0.09% sodium azide	0.05 ml

[Bulk quote request](#)

<b>Availability</b>	1-3 business days
<b>Species Reactivity</b>	Human
<b>Predicted Reactivity</b>	Bovine, Chicken, Mouse, Rat
<b>Format</b>	Antigen affinity purified
<b>Clonality</b>	Polyclonal (rabbit origin)
<b>Isotype</b>	Rabbit Ig
<b>Purity</b>	Antigen affinity
<b>UniProt</b>	P15056
<b>Applications</b>	Western Blot : 1:1000-1:2000
<b>Limitations</b>	This BRAF V600E antibody is available for research use only.



Western blot testing of 1) BRAF-600V, 2) BRAF-V600E, 3) Raji, 4) HeLa, 5) A549, 6) T47D and 7) MDA-MB-453 lysate with BRAF V600E antibody at 1:2000. Predicted molecular weight ~85-95 kDa.

## Description

Protein kinase involved in the transduction of mitogenic signals from the cell membrane to the nucleus. May play a role in the postsynaptic responses of hippocampal neuron. Phosphorylates MAP2K1, and thereby contributes to the MAP kinase signal transduction pathway.

## Application Notes

The stated application concentrations are suggested starting points. Titration of the BRAF V600E antibody may be required due to differences in protocols and secondary/substrate sensitivity.

## Immunogen

A portion of amino acids 576-606 from human BRAF was used as the immunogen for the BRAF V600E antibody.

## Storage

Aliquot the BRAF V600E antibody and store frozen at -20oC or colder. Avoid repeated freeze-thaw cycles.