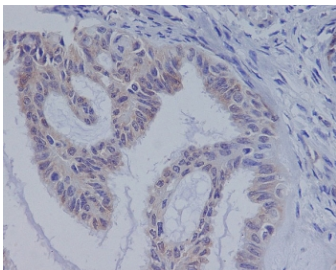


BRAF Antibody [clone CCG-2] (RQ5438)

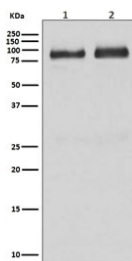
Catalog No.	Formulation	Size
RQ5438	Antibody in PBS with 0.02% sodium azide, 50% glycerol and 0.4-0.5mg/ml BSA	100 ul

[Bulk quote request](#)

Availability	1-2 weeks
Species Reactivity	Human
Format	Purified
Clonality	Rabbit Monoclonal
Isotype	Rabbit IgG
Clone Name	CCG-2
Purity	Affinity purified
UniProt	P15056
Localization	Cytoplasmic, nuclear, cell membrane
Applications	Western Blot : 1:500-1:2000 Immunohistochemistry (FFPE) : 1:50-1:200
Limitations	This BRAF antibody is available for research use only.



IHC staining of FFPE human ovarian cancer with BRAF antibody. HIER: boil tissue sections in pH6, 10mM citrate buffer, for 10-20 min and allow to cool before testing.



Western blot testing of human 1) brain and 2) HepG2 lysate with BRAF antibody. Predicted molecular weight: 85-95 kDa.

Description

The BRAF gene encodes a protein belonging to the RAF family of serine/threonine protein kinases. This protein plays a role in regulating the MAP kinase/ERK signaling pathway, which affects cell division, differentiation, and secretion. Mutations in this gene, most commonly the V600E mutation, are the most frequently identified cancer-causing mutations in melanoma, and have been identified in various other cancers as well, including non-Hodgkin lymphoma, colorectal cancer, thyroid carcinoma, non-small cell lung carcinoma, hairy cell leukemia and adenocarcinoma of lung. Mutations in this gene are also associated with cardiofaciocutaneous, Noonan, and Costello syndromes, which exhibit overlapping phenotypes. [RefSeq]

Application Notes

Optimal dilution of the BRAF antibody should be determined by the researcher.

Immunogen

A synthetic peptide specific to human B Raf was used as the immunogen for the BRAF antibody.

Storage

Store the BRAF antibody at -20oC.