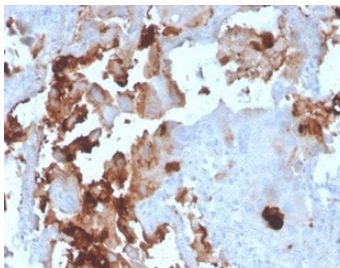


## BPIFB1 Antibody / LPLUNC1 [clone LPLUNC1/3206] (V9138)

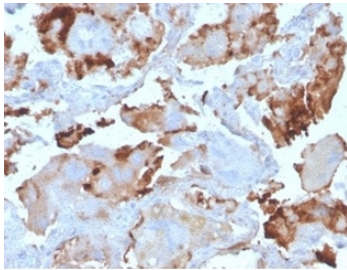
Catalog No.	Formulation	Size
V9138-100UG	0.2 mg/ml in 1X PBS with 0.1 mg/ml BSA (US sourced), 0.05% sodium azide	100 ug
V9138-20UG	0.2 mg/ml in 1X PBS with 0.1 mg/ml BSA (US sourced), 0.05% sodium azide	20 ug
V9138SAF-100UG	1 mg/ml in 1X PBS; BSA free, sodium azide free	100 ug

[Bulk quote request](#)

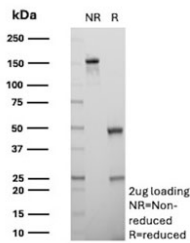
<b>Availability</b>	1-3 business days
<b>Species Reactivity</b>	Human
<b>Format</b>	Purified
<b>Host</b>	Mouse
<b>Clonality</b>	Monoclonal (mouse origin)
<b>Isotype</b>	Mouse IgG
<b>Clone Name</b>	LPLUNC1/3206
<b>Purity</b>	Protein A/G affinity
<b>UniProt</b>	Q8TDL5
<b>Localization</b>	Secreted
<b>Applications</b>	ELISA (order BSA-free Format For Coating) : Western Blot : 1-2ug/ml Immunohistochemistry (FFPE) : 1-2ug/ml
<b>Limitations</b>	This BPIFB1 antibody is available for research use only.



IHC staining of FFPE human breast carcinoma tissue with BPIFB1 antibody (clone LPLUNC1/3206). HIER: boil tissue sections in pH 9 10mM Tris with 1mM EDTA for 20 min and allow to cool before testing.



IHC staining of FFPE human breast carcinoma tissue with BPIFB1 antibody (clone LPLUNC1/3206). HIER: boil tissue sections in pH 9 10mM Tris with 1mM EDTA for 20 min and allow to cool before testing.



SDS-PAGE analysis of purified, BSA-free BPIFB1 antibody (clone LPLUNC1/3206) as confirmation of integrity and purity.

## Description

The upper respiratory tract is the main place of entry for pathogens to invade the body, and early recognition of bacterial products in this region is crucial for host defense. Palate lung nasal epithelial clone PLUNC (or LUNX) is an airway specific secretory protein that is expressed in epithelial tissues and submucosal glands of the oral cavity and upper respiratory tract of humans, mice, rats and cows. PLUNC binds to lipopolysaccharide (LPS) in nasal lavage fluid (NLF) which points to its role in the inflammatory response of the upper airways after exposure to irritants. Decreased levels of PLUNC occur in the NLF of smokers and people who have been exposed to reactive epoxy chemicals, indicating that long-term exposure to airway irritants impairs the production of PLUNC in the upper respiratory tract. Abnormal expression of PLUNC may influence susceptibility to nasopharyngeal carcinoma in the Chinese population.

## Application Notes

Optimal dilution of the BPIFB1 antibody should be determined by the researcher.

## Immunogen

Recombinant full-length human BPIFB1/LPLUNC1 protein was used as the immunogen for the BPIFB1 antibody.

## Storage

Aliquot the BPIFB1 antibody and store frozen at -20oC or colder. Avoid repeated freeze-thaw cycles.