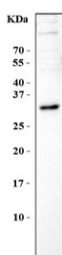


BPIFA1 Antibody / SPLUNC1 / PLUNC (RQ6758)

Catalog No.	Formulation	Size
RQ6758	0.5mg/ml if reconstituted with 0.2ml sterile DI water	100 ug

Bulk quote request

Availability	1-3 business days
Species Reactivity	Human, Mouse
Format	Antigen affinity purified
Clonality	Polyclonal (rabbit origin)
Isotype	Rabbit IgG
Purity	Antigen affinity purified
Buffer	Lyophilized from 1X PBS with 2% Trehalose
UniProt	Q9NP55
Applications	Western Blot : 1-2ug/ml Direct ELISA : 0.1-0.5ug/ml
Limitations	This BPIFA1 antibody is available for research use only.



Western blot testing of mouse NIH 3T3 cell lysate with BPIFA1 antibody. Predicted molecular weight: 25-27 kDa.

Description

Palate, lung, and nasal epithelium clone protein (PLUNC) is a gene encoding a secretory protein. This gene is the human homolog of murine plunc, and like the mouse gene, is specifically expressed in the upper airways and nasopharyngeal regions. The encoded antimicrobial protein displays antibacterial activity against Gram-negative bacteria. It is thought to be involved in inflammatory responses to irritants in the upper airways and may also serve as a potential molecular marker for detection of micrometastasis in non-small-cell lung cancer. Multiple transcript variants resulting from alternative splicing in the 3' UTR have been detected, but the full-length nature of only three are known.

Application Notes

Optimal dilution of the BPIFA1 antibody should be determined by the researcher.

Immunogen

Recombinant human protein (amino acids L64-V256) was used as the immunogen for the BPIFA1 antibody.

Storage

After reconstitution, the BPIFA1 antibody can be stored for up to one month at 4oC. For long-term, aliquot and store at -20oC. Avoid repeated freezing and thawing.