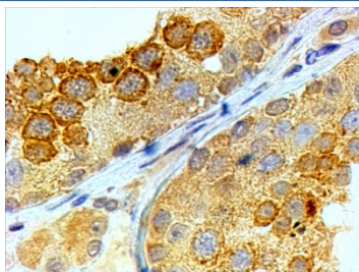


## BOULE Antibody (R35388)

Catalog No.	Formulation	Size
R35388-100UG	0.5 mg/ml in 1X TBS, pH7.3, with 0.5% BSA (US sourced) and 0.02% sodium azide	100 ug

[Bulk quote request](#)

Availability	1-3 business days
Species Reactivity	Human
Predicted Reactivity	Cow, Dog
Format	Antigen affinity purified
Host	Goat
Clonality	Polyclonal (goat origin)
Isotype	Goat Ig
Purity	Antigen affinity
Gene ID	66037
Applications	Immunohistochemistry (FFPE) : 4-6ug/ml ELISA (peptide) LOD : 1:32000
Limitations	This BOULE antibody is available for research use only.



IHC testing of FFPE human testis with BOULE antibody at 4ug/ml. HIER: steamed with pH6 citrate buffer, HRP-staining.

### Description

Additional name(s) for this target protein: BOLL

### Application Notes

Optimal dilution of the BOULE antibody should be determined by the researcher.

## Immunogen

Amino acids QPEPIKTVWSIHY were used as the immunogen for this BOULE antibody.

## Storage

Aliquot and store the BOULE antibody at -20oC.