

BOLA3 Antibody / BoLA-like protein 3 [clone PCRP-BOLA3-1A5] (V4033)

Catalog No.	Formulation	Size
V4033-100UG	0.2 mg/ml in 1X PBS with 0.1 mg/ml BSA (US sourced), 0.05% sodium azide	100 ug
V4033-20UG	0.2 mg/ml in 1X PBS with 0.1 mg/ml BSA (US sourced), 0.05% sodium azide	20 ug
V4033SAF-100UG	1 mg/ml in 1X PBS; BSA free, sodium azide free	100 ug

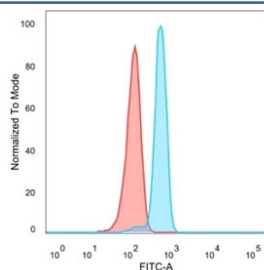
[Bulk quote request](#)

Availability	1-3 business days
Species Reactivity	Human
Format	Purified
Host	Mouse
Clonality	Monoclonal (mouse origin)
Isotype	Mouse IgG1
Clone Name	PCRP-BOLA3-1A5
Purity	Protein A/G affinity
UniProt	Q53S33
Localization	Nucleus, cytoplasm
Applications	Flow Cytometry : 1-2ug/million cells
Limitations	This BOLA3 antibody is available for research use only.

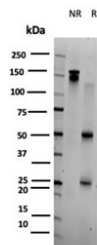
Human Protein Microarray Specificity Validation



Analysis of HuProt(TM) microarray containing more than 19,000 full-length human proteins using BOLA3 antibody (clone PCRP-BOLA3-1A5). These results demonstrate the foremost specificity of the PCRP-BOLA3-1A5 mAb. Z- and S- score: The Z-score represents the strength of a signal that an antibody (in combination with a fluorescently-tagged anti-IgG secondary Ab) produces when binding to a particular protein on the HuProt(TM) array. Z-scores are described in units of standard deviations (SD's) above the mean value of all signals generated on that array. If the targets on the HuProt(TM) are arranged in descending order of the Z-score, the S-score is the difference (also in units of SD's) between the Z-scores. The S-score therefore represents the relative target specificity of an Ab to its intended target.



Flow cytometry staining of PFA-fixed human HeLa cells with BOLA3 antibody (clone PCR-P-BOLA3-1A5, blue) and isotype control (red).



SDS-PAGE analysis of purified, BSA-free BOLA3 antibody (clone PCR-P-BOLA3-1A5) as confirmation of integrity and purity.

Description

Acts as a mitochondrial iron-sulfur (Fe-S) cluster assembly factor that facilitates (Fe-S) cluster insertion into a subset of mitochondrial proteins. Probably acts together with NFU1. Localizes to mitochondria, in agreement with other members of the family.

Application Notes

Optimal dilution of the BOLA3 antibody should be determined by the researcher.

Immunogen

A portion of amino acids 1-103 from the human BOLA3 protein was used as the immunogen for the BOLA3 antibody.

Storage

Aliquot the BOLA3 antibody and store frozen at -20°C or colder. Avoid repeated freeze-thaw cycles.