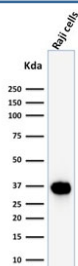


## BOB1 Antibody [clone BOB1/2425] (V3903)

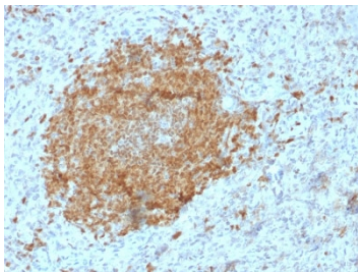
Catalog No.	Formulation	Size
V3903-100UG	0.2 mg/ml in 1X PBS with 0.1 mg/ml BSA (US sourced) and 0.05% sodium azide	100 ug
V3903-20UG	0.2 mg/ml in 1X PBS with 0.1 mg/ml BSA (US sourced) and 0.05% sodium azide	20 ug
V3903SAF-100UG	1 mg/ml in 1X PBS; BSA free, sodium azide free	100 ug

[Bulk quote request](#)

<b>Availability</b>	1-3 business days
<b>Species Reactivity</b>	Human
<b>Format</b>	Purified
<b>Clonality</b>	Monoclonal (mouse origin)
<b>Isotype</b>	Mouse IgG2b, kappa
<b>Clone Name</b>	BOB1/2425
<b>Purity</b>	Protein G affinity
<b>UniProt</b>	Q16633
<b>Localization</b>	Nuclear
<b>Applications</b>	Western Blot : 1-2ug/ml Immunohistochemistry (FFPE) : 1-2ug/ml for 30 min at RT
<b>Limitations</b>	This BOB1 antibody is available for research use only.

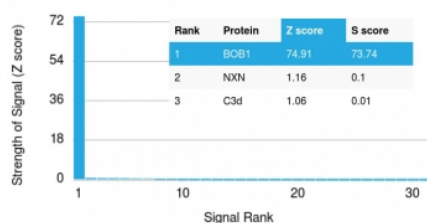


Western blot testing of human Raji cell lysate with BOB1 antibody (clone BOB1/2425).  
Predicted molecular weight: ~28 kDa (unmodified), 35-40 kDa (ubiquitinated).



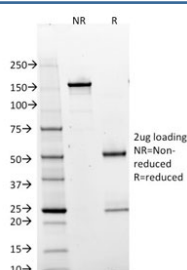
IHC testing of FFPE human spleen with BOB1 antibody (clone BOB1/2425). HIER: boil tissue sections in pH6, 10mM citrate buffer, for 10-20 min followed by cooling at RT for 20 min.

#### Human Protein Microarray Specificity Validation



Analysis of HuProt(TM) microarray containing more than 19,000 full-length human proteins using BOB1 antibody (clone BOB1/2425). These results demonstrate the foremost specificity of the BOB1/2425 mAb.

Z- and S- score: The Z-score represents the strength of a signal that an antibody (in combination with a fluorescently-tagged anti-IgG secondary Ab) produces when binding to a particular protein on the HuProt(TM) array. Z-scores are described in units of standard deviations (SD's) above the mean value of all signals generated on that array. If the targets on the HuProt(TM) are arranged in descending order of the Z-score, the S-score is the difference (also in units of SD's) between the Z-scores. The S-score therefore represents the relative target specificity of an Ab to its intended target.



SDS-PAGE analysis of purified, BSA-free BOB1 antibody (clone BOB1/2425) as confirmation of integrity and purity.

## Description

BOB1, also called POU2AF1, expression in a variety of established B-cell lines, representing different stages of B-cell development, has suggested a constitutive, B-cell-specific expression pattern. LP cells in nodular lymphocyte predominant Hodgkin lymphoma, because they are germinal center-derived, are consistently immuno-positive for BOB1. Conversely, only some cases of classical Hodgkin lymphoma show BOB1 immuno-reactivity within the Hodgkin and Reed-Sternberg cells. Expression of BOB1 has been reported in follicular center cell lymphoma, diffuse large B-cell lymphoma and some cases of acute myeloid leukemia. B-CLL, marginal zone lymphoma, and mantle cell lymphoma may show weak to moderate immunoreactivity.

## Application Notes

Optimal dilution of the BOB1 antibody should be determined by the researcher.

## Immunogen

A portion of amino acids 148-255 from the human protein was used as the immunogen for the BOB1 antibody.

## Storage

Store the BOB1 antibody at 2-8°C (with azide) or aliquot and store at -20°C or colder (without azide).

