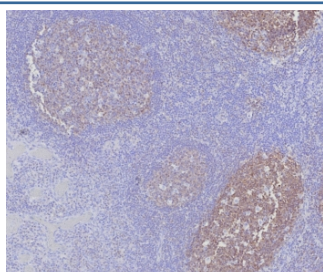


BOB-1 Antibody / POU2AF1 [clone BOB1/7469] (V4179)

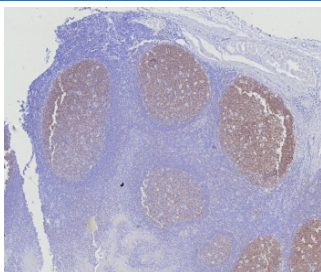
Catalog No.	Formulation	Size
V4179-100UG	0.2 mg/ml in 1X PBS with 0.1 mg/ml BSA (US sourced), 0.05% sodium azide	100 ug
V4179-20UG	0.2 mg/ml in 1X PBS with 0.1 mg/ml BSA (US sourced), 0.05% sodium azide	20 ug
V4179SAF-100UG	1 mg/ml in 1X PBS; BSA free, sodium azide free	100 ug

Bulk quote request

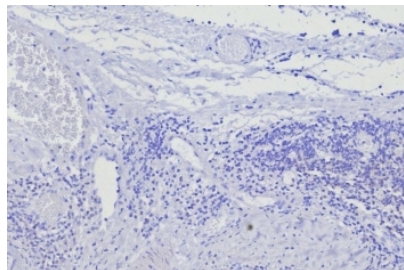
Availability	1-3 business days
Species Reactivity	Human
Format	Purified
Clonality	Monoclonal (mouse origin)
Isotype	Mouse IgG
Clone Name	BOB1/7469
Purity	Protein A/G affinity
UniProt	Q16633
Localization	Nucleus
Applications	Immunohistochemistry (FFPE) (1-2ug/ml For 30 Min At RT) :
Limitations	This BOB-1 antibody is available for research use only.



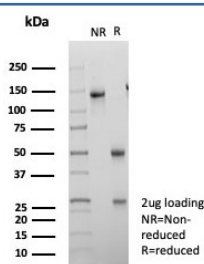
IHC staining of FFPE human tonsil tissue with BOB1 antibody (clone BOB1/7469). HIER: boil tissue sections in pH 9 10mM Tris with 1mM EDTA for 20 min and allow to cool before testing.



IHC staining of FFPE human tonsil tissue with BOB1 antibody (clone BOB1/7469). HIER: boil tissue sections in pH 9 10mM Tris with 1mM EDTA for 20 min and allow to cool before testing.



Negative control: IHC testing of FFPE human skin in tonsil with BOB1 antibody (clone BOB1/7469) at 2ug/ml. HIER: boil tissue sections in pH 9 10mM Tris with 1mM EDTA for 20 min and allow to cool before testing.



SDS-PAGE analysis of purified, BSA-free BOB1 antibody (clone BOB1/7469) as confirmation of integrity and purity.

Description

BOB.1 expression in a variety of established B-cell lines, representing different stages of B-cell development, has suggested a constitutive, B-cell-specific expression pattern. LP cells in nodular lymphocyte predominant Hodgkin lymphoma, because they are germinal center-derived, are consistently immuno-positive for BOB.1. Conversely, only some cases of classical Hodgkin lymphoma show BOB.1 immuno-reactivity within the Hodgkin and Reed-Sternberg cells. Expression of BOB.1 has been reported in follicular center cell lymphoma, diffuse large B-cell lymphoma and some cases of acute myeloid leukemia. B-CLL, marginal zone lymphoma, and mantle cell lymphoma may show weak to moderate immunoreactivity.

Application Notes

Optimal dilution of the BOB-1 antibody should be determined by the researcher.

Immunogen

A recombinant partial protein (within amino acids 148-255) from the human protein was used as the immunogen for the BOB-1 antibody.

Storage

Aliquot the BOB-1 antibody and store frozen at -20oC or colder. Avoid repeated freeze-thaw cycles.

