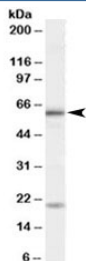


BMPR1A Antibody (R34642)

Catalog No.	Formulation	Size
R34642-100UG	0.5 mg/ml in 1X TBS, pH7.3, with 0.5% BSA (US sourced) and 0.02% sodium azide	100 ug

[Bulk quote request](#)

Availability	1-3 business days
Species Reactivity	Human
Predicted Reactivity	Dog
Format	Antigen affinity purified
Host	Goat
Clonality	Polyclonal (goat origin)
Isotype	Goat Ig
Purity	Antigen affinity
Gene ID	657
Applications	Western Blot : 1-3ug/ml ELISA (peptide) LOD : 1:16000
Limitations	This BMPR1A antibody is available for research use only.



Western blot testing of HeLa cell lysate with BMPR1A antibody at 1ug/ml. Molecular weight: he expected ~60kDa band and additional ~20kDa band are both blocked by the immunizing peptide.

Description

Additional name(s) for this target protein: Bone morphogenetic protein receptor, type IA

Application Notes

Optimal dilution of the BMPR1A antibody should be determined by the researcher.

Immunogen

Amino acids KSDSDQKKSEN were used as the immunogen for this BMPR1A antibody.

Storage

Aliquot and store the BMPR1A antibody at -20oC.