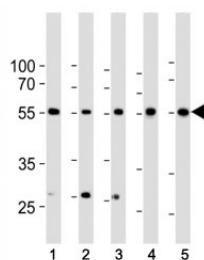


BMPR1A Antibody (F47727)

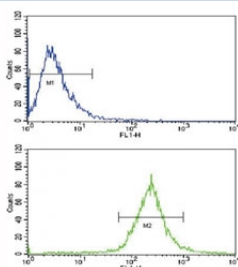
Catalog No.	Formulation	Size
F47727-0.4ML	In 1X PBS, pH 7.4, with 0.09% sodium azide	0.4 ml
F47727-0.08ML	In 1X PBS, pH 7.4, with 0.09% sodium azide	0.08 ml

Bulk quote request

Availability	1-3 business days
Species Reactivity	Human
Format	Purified
Host	Rabbit
Clonality	Polyclonal (rabbit origin)
Isotype	Rabbit Ig
Purity	Purified
UniProt	P36894
Applications	Western Blot : 1:1000 Flow Cytometry : 1:10-1:50
Limitations	This BMPR1A antibody is available for research use only.



Western blot analysis of lysate from 1) HeLa, 2) K562, 3) MCF-7 cell line, 4) human liver and 5) mouse liver tissue lysate using BMPR1A antibody at 1:1000. Predicted molecular weight ~60 kDa.



Flow cytometric analysis of WiDr cells using BMPR1A antibody (blue) compared to a [negative control](#) (green). FITC-conjugated goat-anti-rabbit secondary Ab was used for the analysis.

Description

On ligand binding, BMPR1A forms a receptor complex consisting of two type II and two type I transmembrane serine/threonine kinases. Type II receptors phosphorylate and activate type I receptors which autophosphorylate, then bind and activate SMAD transcriptional regulators. Receptor for BMP-2 and BMP-4. Positively regulates chondrocyte differentiation through GDF5 interaction (By similarity). [UniProt]

Application Notes

Titration of the BMPR1A antibody may be required due to differences in protocols and secondary/substrate sensitivity.

Immunogen

A portion of amino acids 1-30 from the human protein was used as the immunogen for this BMPR1A antibody.

Storage

Aliquot the BMPR1A antibody and store frozen at -20oC or colder. Avoid repeated freeze-thaw cycles.