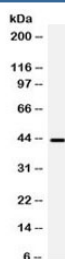


## BMP6 Antibody (R32014)

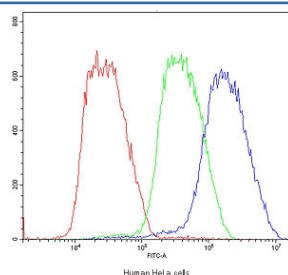
Catalog No.	Formulation	Size
R32014	0.5mg/ml if reconstituted with 0.2ml sterile DI water	100 ug

**Bulk quote request**

<b>Availability</b>	1-3 business days
<b>Species Reactivity</b>	Human
<b>Format</b>	Antigen affinity purified
<b>Clonality</b>	Polyclonal (rabbit origin)
<b>Isotype</b>	Rabbit IgG
<b>Purity</b>	Antigen affinity
<b>Buffer</b>	Lyophilized from 1X PBS with 2.5% BSA and 0.025% sodium azide
<b>UniProt</b>	P22004
<b>Applications</b>	Western Blot : 0.1-0.5ug/ml Flow Cytometry : 1-3ug/10 <sup>6</sup> cells ELISA : 0.1-0.5ug/ml (human protein tested); request BSA-free format for coating
<b>Limitations</b>	This BMP6 antibody is available for research use only.



Western blot testing of human HeLa cell lysate with BMP6 antibody. Expected molecular weight: ~57 kDa (precursor), ~46 kDa (cleaved precursor), 18-23 kDa (mature).



Flow cytometry testing of human HeLa cells with BMP6 antibody at 1ug/10<sup>6</sup> cells (blocked with goat sera); Red=cells alone, Green=isotype control, Blue=BMP6 antibody.

## Description

Bone morphogenetic protein 6 is a protein that in humans is encoded by the BMP6 gene. The bone morphogenetic proteins (BMPs) are a family of secreted signaling molecules that can induce ectopic bone growth. Many BMPs are part of the transforming growth factor-beta (TGFB) superfamily. BMPs were originally identified by an ability of demineralized bone extract to induce endochondral osteogenesis in vivo in an extraskeletal site. Based on its expression early in embryogenesis, the BMP encoded by this gene has a proposed role in early development. In addition, the fact that this BMP is closely related to BMP5 and BMP7 has lead to speculation of possible bone inductive activity.

## Application Notes

Optimal dilution of the BMP6 antibody should be determined by the researcher.

## Immunogen

Amino acids QSRNRSTQSQDVARVSSASDYNSSELKTACRKHELYV of human BMP6 were used as the immunogen for the BMP6 antibody.

## Storage

After reconstitution, the BMP6 antibody can be stored for up to one month at 4oC. For long-term, aliquot and store at -20oC. Avoid repeated freezing and thawing.