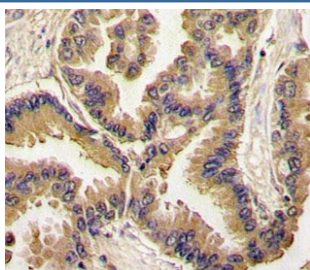


BMP6 Antibody (F45401)

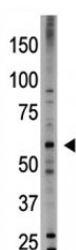
Catalog No.	Formulation	Size
F45401-0.4ML	In 1X PBS, pH 7.4, with 0.09% sodium azide	0.4 ml
F45401-0.08ML	In 1X PBS, pH 7.4, with 0.09% sodium azide	0.08 ml

[Bulk quote request](#)

Availability	1-3 business days
Species Reactivity	Human
Format	Purified
Clonality	Polyclonal (rabbit origin)
Isotype	Rabbit Ig
Purity	Purified
UniProt	P22004
Localization	Cytoplasmic
Applications	Western Blot : 1:1000 IHC (Paraffin) : 1:10-1:50
Limitations	This BMP6 antibody is available for research use only.



IHC analysis of FFPE human lung carcinoma tissue stained with BMP6 antibody



Western blot testing of BMP6 antibody and HL-60 cell lysate. Expected molecular weight: ~57kDa (precursor), ~46kDa (cleaved precursor), 18-23kDa (mature).

Description

The bone morphogenetic proteins (BMPs) are a family of secreted signaling molecules that can induce ectopic bone growth. Many BMPs are part of the transforming growth factor-beta (TGFB) superfamily. BMPs were originally identified by an ability of demineralized bone extract to induce endochondral osteogenesis in vivo in an extraskeletal site. Based on its expression early in embryogenesis, Bmp6 has a proposed role in early development. In addition, the fact that BMP6 is closely related to BMP5 and BMP7 has lead to speculation of possible bone inductive activity.

Application Notes

Titration of the BMP6 antibody may be required due to differences in protocols and secondary/substrate sensitivity.

Immunogen

A portion of amino acids 25-55 from the human protein was used as the immunogen for this BMP6 antibody.

Storage

Aliquot the BMP6 antibody and store frozen at -20oC or colder. Avoid repeated freeze-thaw cycles.