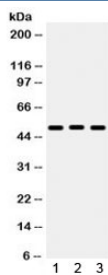


BMP5 Antibody (R32013)

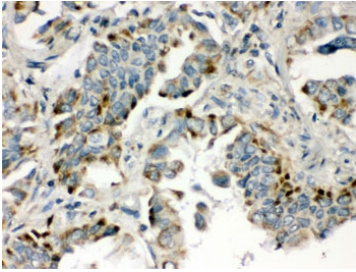
Catalog No.	Formulation	Size
R32013	0.5mg/ml if reconstituted with 0.2ml sterile DI water	100 ug

[Bulk quote request](#)

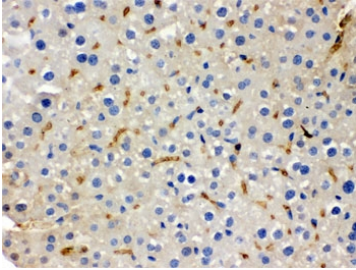
Availability	1-3 business days
Species Reactivity	Human, Mouse, Rat
Format	Antigen affinity purified
Host	Rabbit
Clonality	Polyclonal (rabbit origin)
Isotype	Rabbit IgG
Purity	Antigen affinity
Buffer	Lyophilized from 1X PBS with 2.5% BSA and 0.025% sodium azide
UniProt	P22003
Localization	Cytoplasmic, membrane
Applications	Western Blot : 0.1-0.5ug/ml IHC (FFPE) : 0.5-1ug/ml Flow Cytometry : 1-3ug/10 ⁶ cells ELISA : 0.1-0.5ug/ml (human protein tested); request BSA-free format for coating
Limitations	This BMP5 antibody is available for research use only.



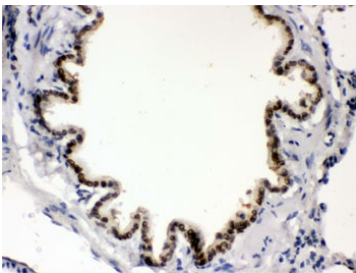
Western blot testing of 1) rat liver, 2) mouse liver, 3) human A549 lysate with BMP5 antibody. Expected/observed molecular weight ~51 kDa.



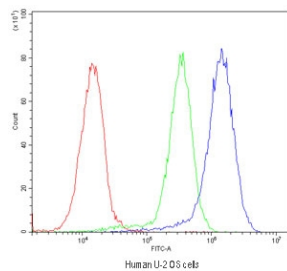
IHC testing of FFPE human lung cancer tissue with BMP5 antibody. HIER: Boil the paraffin sections in pH 6, 10mM citrate buffer for 20 minutes and allow to cool prior to staining.



IHC testing of FFPE mouse liver with BMP5 antibody. HIER: Boil the paraffin sections in pH 6, 10mM citrate buffer for 20 minutes and allow to cool prior to staining.



IHC testing of FFPE rat lung with BMP5 antibody. HIER: Boil the paraffin sections in pH 6, 10mM citrate buffer for 20 minutes and allow to cool prior to staining.



Flow cytometry testing of human U-2 OS cells with BMP5 antibody at $1\mu\text{g}/10^6$ cells (blocked with goat sera); Red=cells alone, Green=isotype control, Blue=BMP5 antibody.

Description

Bone morphogenetic protein 5 is a protein that in humans is encoded by the BMP5 gene. This gene encodes a member of the bone morphogenetic protein family which is part of the transforming growth factor-beta superfamily. The superfamily includes large families of growth and differentiation factors. Bone morphogenetic proteins were originally identified by an ability of demineralized bone extract to induce endochondral osteogenesis in vivo in an extraskelatal site. These proteins are synthesized as prepropeptides, cleaved, and then processed into dimeric proteins. And this protein may act as an important signaling molecule within the trabecular meshwork and optic nerve head, and may play a potential role in glaucoma pathogenesis. This gene is differentially regulated during the formation of various tumors.

Application Notes

Optimal dilution of the BMP5 antibody should be determined by the researcher.

Immunogen

Amino acids HQDSSRMSSVGDYNTSEKQKQACKKHELYVSFRDL of human BMP5 were used as the immunogen for the BMP5 antibody.

Storage

After reconstitution, the BMP5 antibody can be stored for up to one month at 4°C. For long-term, aliquot and store at -20°C. Avoid repeated freezing and thawing.