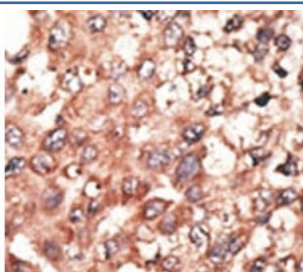


## BMP5 Antibody (F45396)

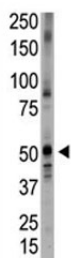
Catalog No.	Formulation	Size
F45396-0.4ML	In 1X PBS, pH 7.4, with 0.09% sodium azide	0.4 ml
F45396-0.08ML	In 1X PBS, pH 7.4, with 0.09% sodium azide	0.08 ml

[Bulk quote request](#)

<b>Availability</b>	1-3 business days
<b>Species Reactivity</b>	Human
<b>Predicted Reactivity</b>	Mouse
<b>Format</b>	Purified
<b>Clonality</b>	Polyclonal (rabbit origin)
<b>Isotype</b>	Rabbit Ig
<b>Purity</b>	Purified
<b>UniProt</b>	P22003
<b>Localization</b>	Cytoplasmic, membrane
<b>Applications</b>	Western Blot : 1:1000 IHC (Paraffin) : 1:50-1:100
<b>Limitations</b>	This BMP5 antibody is available for research use only.



IHC analysis of FFPE human hepatocarcinoma tissue stained with the BMP5 antibody



Western blot testing of BMP5 antibody and placenta tissue lysate.

## Description

Bmp5 is a member of the bone morphogenetic protein family which is part of the transforming growth factor-beta superfamily. The superfamily includes large families of growth and differentiation factors. Bone morphogenetic proteins were originally identified by an ability of demineralized bone extract to induce endochondral osteogenesis in vivo in an extraskelatal site. These proteins are synthesized as prepropeptides, cleaved, and then processed into dimeric proteins. This protein may act as an important signaling molecule within the trabecular meshwork and optic nerve head, and may play a potential role in glaucoma pathogenesis. This gene is differentially regulated during the formation of various tumors.

## Application Notes

Titration of the BMP5 antibody may be required due to differences in protocols and secondary/substrate sensitivity.

## Immunogen

A portion of amino acids 16-46 from the human protein was used as the immunogen for this BMP5 antibody.

## Storage

Aliquot the BMP5 antibody and store frozen at -20oC or colder. Avoid repeated freeze-thaw cycles.