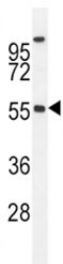


BMP4 Antibody (F45385)

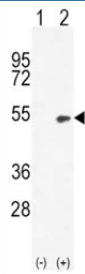
Catalog No.	Formulation	Size
F45385-0.4ML	In 1X PBS, pH 7.4, with 0.09% sodium azide	0.4 ml
F45385-0.08ML	In 1X PBS, pH 7.4, with 0.09% sodium azide	0.08 ml

[Bulk quote request](#)

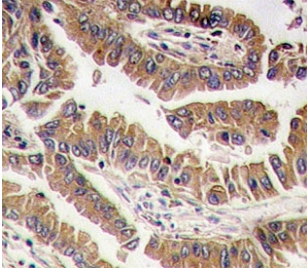
Availability	1-3 business days
Species Reactivity	Human
Predicted Reactivity	Bovine, Mouse, Rabbit
Format	Purified
Host	Rabbit
Clonality	Polyclonal (rabbit origin)
Isotype	Rabbit Ig
Purity	Purified
UniProt	P12644
Localization	Cytoplasmic, membrane
Applications	Western Blot : 1:1000 IHC (Paraffin) : 1:10-1:50
Limitations	This BMP4 antibody is available for research use only.



BMP4 antibody western blot analysis in MDA-MB435 lysate. Predicted molecular weight: 54 kDa (precursor), 44 kDa (cleaved dimer), 23 kDa (cleaved monomer).



Western blot analysis of BMP4 antibody and 293 cell lysate (2 ug/lane) either nontransfected (Lane 1) or transiently transfected (2) with the BMP4 gene.



IHC analysis of FFPE human lung carcinoma tissue stained with BMP4 antibody

Description

Bmp4 is a member of the bone morphogenetic protein family which is part of the transforming growth factor-beta superfamily. The superfamily includes large families of growth and differentiation factors. Bone morphogenetic proteins were originally identified by an ability of demineralized bone extract to induce endochondral osteogenesis in vivo in an extraskelatal site. This particular family member plays an important role in the onset of endochondral bone formation in humans, and a reduction in expression has been associated with a variety of bone diseases, including the heritable disorder Fibrodysplasia Ossificans Progressiva. Alternative splicing in the 5' untranslated region of this gene has been described and three variants are described, all encoding an identical protein.

Application Notes

Titration of the BMP4 antibody may be required due to differences in protocols and secondary/substrate sensitivity.

Immunogen

A portion of amino acids 5-34 from the human protein was used as the immunogen for this BMP4 antibody.

Storage

Aliquot the BMP4 antibody and store frozen at -20oC or colder. Avoid repeated freeze-thaw cycles.