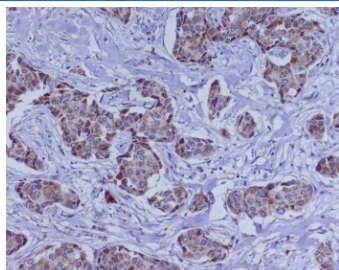


BMP4 Antibody / Bone morphogenetic protein 4 [clone BBB-2] (RQ5387)

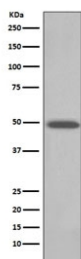
Catalog No.	Formulation	Size
RQ5387	Antibody in PBS with 0.02% sodium azide, 50% glycerol and 0.4-0.5mg/ml BSA	100 ul

[Bulk quote request](#)

Availability	1-2 weeks
Species Reactivity	Human
Format	Purified
Host	Rabbit
Clonality	Rabbit Monoclonal
Isotype	Rabbit IgG
Clone Name	BBB-2
Purity	Affinity purified
UniProt	P12644
Applications	Western Blot : 1:500-1:2000 Immunohistochemistry (FFPE) : 1:50-1:200
Limitations	This BMP4 antibody is available for research use only.



IHC staining of FFPE human breast cancer with BMP4 antibody. HIER: boil tissue sections in pH6, 10mM citrate buffer, for 10-20 min and allow to cool before testing.



Western blot testing of human HeLa cell lysate with BMP4 antibody. Expected molecular weight: 54 kDa (precursor), 44 kDa (cleaved dimer), 23 kDa (cleaved monomer).

Description

The BMP4 gene encodes a secreted ligand of the TGF-beta (transforming growth factor-beta) superfamily of proteins. Ligands of this family bind various TGF-beta receptors leading to recruitment and activation of SMAD family transcription factors that regulate gene expression. The encoded preproprotein is proteolytically processed to generate each subunit of the disulfide-linked homodimer. This protein regulates heart development and adipogenesis. Mutations in this gene are associated with orofacial cleft and microphthalmia in human patients. The encoded protein may also be involved in the pathology of multiple cardiovascular diseases and human cancers. [RefSeq]

Application Notes

Optimal dilution of the BMP4 antibody should be determined by the researcher.

Immunogen

A synthetic peptide specific to human BMP4 was used as the immunogen for the BMP4 antibody.

Storage

Store the BMP4 antibody at -20oC.