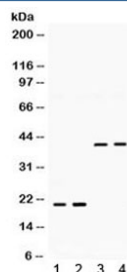


## BMP2 Antibody (R31949)

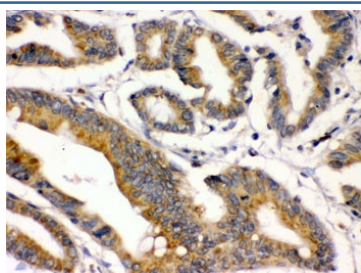
Catalog No.	Formulation	Size
R31949	0.5mg/ml if reconstituted with 0.2ml sterile DI water	100 ug

**Bulk quote request**

<b>Availability</b>	1-3 business days
<b>Species Reactivity</b>	Human, Rat
<b>Format</b>	Antigen affinity purified
<b>Clonality</b>	Polyclonal (rabbit origin)
<b>Isotype</b>	Rabbit IgG
<b>Purity</b>	Antigen affinity
<b>Buffer</b>	Lyophilized from 1X PBS with 2.5% BSA, 0.025% sodium azide
<b>UniProt</b>	P12643
<b>Localization</b>	Cytoplasmic
<b>Applications</b>	Western Blot : 0.1-0.5ug/ml IHC (FFPE) : 0.5-1ug/ml ELISA : 0.1-0.5ug/ml (human protein tested); request BSA-free format for coating
<b>Limitations</b>	This BMP2 antibody is available for research use only.



Western blot testing of 1) rat brain, 2) rat lung, 3) human U87, 4) human HeLa lysate with BMP2 antibody. Expected molecular weight: 13-14 kDa per monomer.



IHC testing of FFPE human intestinal cancer tissue with BMP2 antibody. HIER: Boil the paraffin sections in pH 6, 10mM citrate buffer for 20 minutes and allow to cool prior to staining.

## Description

BMP2 is also known as Bone morphogenetic protein 2 or BMP2A. It is mapped to 20p12. The protein encoded by this gene belongs to the transforming growth factor-beta (TGFB) superfamily. BMP-2, like other bone morphogenetic proteins, plays an important role in the development of bone and cartilage. It is involved in the hedgehog pathway, TGF beta signaling pathway, and in cytokine-cytokine receptor interaction. Also, it is involved in cardiac cell differentiation and epithelial to mesenchymal transition. In addition, BMP2A has been suggested as a reasonable candidate for the human condition fibrodysplasia (myositis) ossificans progressiva, on the basis of observations in a *Drosophila* model.

## Application Notes

Optimal dilution of the BMP2 antibody should be determined by the researcher.

## Immunogen

Amino acids QAKHKQRKRLKSSCKRHPLYVDFSDVGWND of human BMP2 were used as the immunogen for the BMP2 antibody.

## Storage

After reconstitution, the BMP2 antibody can be stored for up to one month at 4°C. For long-term, aliquot and store at -20°C. Avoid repeated freezing and thawing.