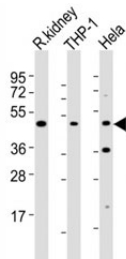


BMP2 Antibody (F53444)

Catalog No.	Formulation	Size
F53444-0.4ML	In 1X PBS, pH 7.4, with 0.09% sodium azide	0.4 ml
F53444-0.08ML	In 1X PBS, pH 7.4, with 0.09% sodium azide	0.08 ml

[Bulk quote request](#)

Availability	1-3 business days
Species Reactivity	Human, Rat
Format	Antigen affinity purified
Host	Rabbit
Clonality	Polyclonal (rabbit origin)
Isotype	Rabbit Ig
Purity	Antigen affinity
UniProt	P12643
Localization	Cytoplasmic
Applications	Western Blot : 1:2000
Limitations	This BMP2 antibody is available for research use only.



Western blot testing of BMP2 antibody at 1:2000 dilution. Lane 1: rat kidney lysate; 2: THP-1 lysate; 3: HeLa lysate; Expected molecular weight: 13-14 kDa per monomer.

Description

Induces cartilage and bone formation.

Explore our [BMP2 Antibody / Osteogenic Growth Factor Antibody](#) page for additional validation data and applications involving skeletal development, osteogenesis, and tissue regeneration.

Application Notes

The stated application concentrations are suggested starting amounts. Titration of the BMP2 antibody may be required due to differences in protocols and secondary/substrate sensitivity.

Immunogen

This BMP2 antibody was produced from a rabbit immunized with a recombinant protein of human BMP2.

Storage

Store at 4°C for up to one month. For long term, aliquot the BMP2 antibody and store frozen at -20°C or colder. Avoid repeated freeze-thaw cycles.