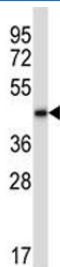


BMP2 Antibody (F43310)

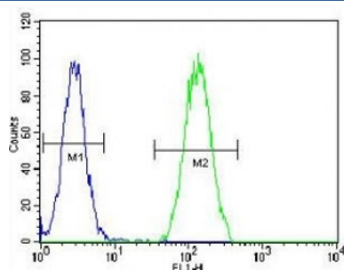
Catalog No.	Formulation	Size
F43310-0.4ML	In 1X PBS, pH 7.4, with 0.09% sodium azide	0.4 ml
F43310-0.08ML	In 1X PBS, pH 7.4, with 0.09% sodium azide	0.08 ml

Bulk quote request

Availability	1-3 business days
Species Reactivity	Human
Predicted Reactivity	Mouse, Rat, Chicken
Format	Antigen affinity purified
Clonality	Polyclonal (rabbit origin)
Isotype	Rabbit Ig
Purity	Antigen affinity
UniProt	P12643
Localization	Cytoplasmic
Applications	Western Blot : 1:1000 Flow Cytometry : 1:10-1:50
Limitations	This BMP2 antibody is available for research use only.



BMP2 antibody western blot analysis in human CEM lysate. Expected molecular weight: 13-14 kDa per monomer.



BMP2 antibody flow cytometric analysis of HeLa cells (green) compared to a [negative control](#) (blue). FITC-conjugated goat-anti-rabbit secondary Ab was used for the analysis.

Description

The protein encoded by this gene belongs to the transforming growth factor-beta (TGFB) superfamily. The encoded protein acts as a disulfide-linked homodimer and induces bone and cartilage formation.

Application Notes

Titration of the BMP2 antibody may be required due to differences in protocols and secondary/substrate sensitivity.

Immunogen

A portion of amino acids 260-289 from the human protein was used as the immunogen for this BMP2 antibody.

Storage

Aliquot the BMP2 antibody and store frozen at -20oC or colder. Avoid repeated freeze-thaw cycles.