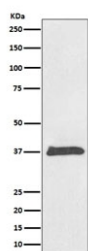


## BMP2 Antibody / Bone morphogenetic protein 2 [clone AOHD-2] (RQ5386)

Catalog No.	Formulation	Size
RQ5386	Antibody in PBS with 0.02% sodium azide, 50% glycerol and 0.4-0.5mg/ml BSA	100 ul

[Bulk quote request](#)

Availability	1-2 weeks
Species Reactivity	Human
Format	Purified
Clonality	Rabbit Monoclonal
Isotype	Rabbit IgG
Clone Name	AOHD-2
Purity	Affinity purified
UniProt	P12643
Applications	Western Blot : 1:500-1:2000
Limitations	This BMP2 antibody is available for research use only.



Western blot testing of human HeLa cell lysate with BMP2 antibody. Expected molecular weight: 13-14 kDa per monomer.

### Description

The BMP2 gene encodes a secreted ligand of the TGF-beta (transforming growth factor-beta) superfamily of proteins. Ligands of this family bind various TGF-beta receptors leading to recruitment and activation of SMAD family transcription factors that regulate gene expression. The encoded preproprotein is proteolytically processed to generate each subunit of the disulfide-linked homodimer, which plays a role in bone and cartilage development. Duplication of a regulatory region downstream of this gene causes a form of brachydactyly characterized by a malformed index finger and second toe in human patients. [RefSeq]

## Application Notes

Optimal dilution of the BMP2 antibody should be determined by the researcher.

## Immunogen

A synthetic peptide specific to human BMP2 was used as the immunogen for the BMP2 antibody.

## Storage

Store the BMP2 antibody at -20oC.