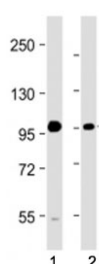


## BMP1 Antibody (F54090)

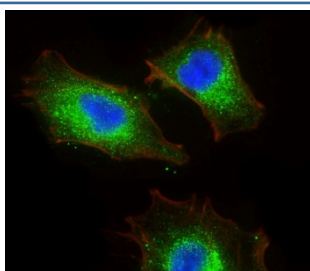
Catalog No.	Formulation	Size
F54090-0.2ML	In 1X PBS, pH 7.4, with 0.09% sodium azide	0.2 ml
F54090-0.05ML	In 1X PBS, pH 7.4, with 0.09% sodium azide	0.05 ml

[Bulk quote request](#)

<b>Availability</b>	1-3 business days
<b>Species Reactivity</b>	Human
<b>Format</b>	Antigen affinity purified
<b>Clonality</b>	Polyclonal (rabbit origin)
<b>Isotype</b>	Rabbit Ig
<b>Purity</b>	Antigen affinity
<b>UniProt</b>	P13497
<b>Localization</b>	Cytoplasmic
<b>Applications</b>	Western Blot : 1:2000 Immunofluorescence : 1:25
<b>Limitations</b>	This BMP1 antibody is available for research use only.



Western blot testing of BMP1 antibody at 1:2000: Lane 1) human A549 and 2) U-251 MG cell lysate. Predicted molecular weight ~111 kDa.



Immunofluorescent staining of fixed and permeabilized human A549 cells with BMP1 antibody.

## Description

Cleaves the C-terminal propeptides of procollagen I, II and III. Induces cartilage and bone formation. May participate in dorsoventral patterning during early development by cleaving chordin (CHRD). Responsible for the proteolytic activation of lysyl oxidase LOX. [UniProt]

## Application Notes

The stated application concentrations are suggested starting points. Titration of the BMP1 antibody may be required due to differences in protocols and secondary/substrate sensitivity.

## Immunogen

Recombinant human BMP1 was used as the immunogen for the BMP1 antibody.

## Storage

Aliquot the BMP1 antibody and store frozen at -20oC or colder. Avoid repeated freeze-thaw cycles.