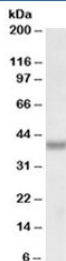


BMI1 Antibody (R35920)

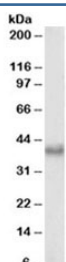
Catalog No.	Formulation	Size
R35920-100UG	0.5 mg/ml in 1X TBS, pH7.3, with 0.5% BSA (US sourced) and 0.02% sodium azide	100 ug

[Bulk quote request](#)

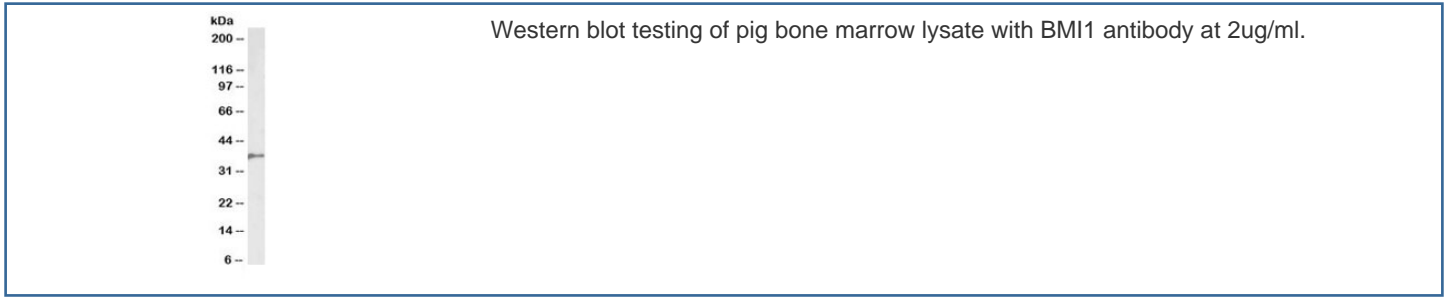
Availability	1-3 business days
Species Reactivity	Human, Mouse, Pig
Predicted Reactivity	Dog
Format	Antigen affinity purified
Host	Goat
Clonality	Polyclonal (goat origin)
Isotype	Goat Ig
Purity	Antigen affinity
Gene ID	648
Applications	Western Blot : 0.1-2ug/ml ELISA (peptide) LOD : 1:128000
Limitations	This BMI1 antibody is available for research use only.



Western blot testing of human K562 nuclear lysate with BMI1 antibody at 0.1 ug/ml.
Predicted molecular weight: 37-43 kDa.



Western blot testing of mouse NIH3T3 nuclear lysate with BMI1 antibody at 0.3ug/ml



Description

Additional name(s) for this target protein: B lymphoma Mo-MLV insertion region 1

Application Notes

Optimal dilution of the BMI1 antibody should be determined by the researcher.

Immunogen

Amino acids SHQRDGLTNAGELES were used as the immunogen for this BMI1 antibody.

Storage

Aliquot and store the BMI1 antibody at -20oC.