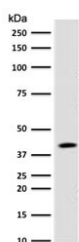


BMI1 Antibody [clone PGRF4-1] (V7401)

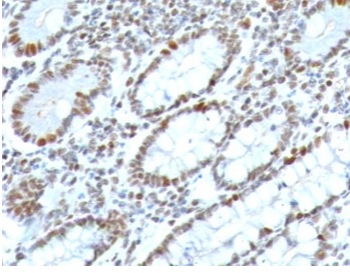
Catalog No.	Formulation	Size
V7401-100UG	0.2 mg/ml in 1X PBS with 0.1 mg/ml BSA (US sourced) and 0.05% sodium azide	100 ug
V7401-20UG	0.2 mg/ml in 1X PBS with 0.1 mg/ml BSA (US sourced) and 0.05% sodium azide	20 ug
V7401SAF-100UG	1 mg/ml in 1X PBS; BSA free, sodium azide free	100 ug
V7401IHC-7ML	Prediluted in 1X PBS with 0.1 mg/ml BSA (US sourced) and 0.05% sodium azide; *For IHC use only*	7 ml

Bulk quote request

Availability	1-3 business days
Species Reactivity	Human
Format	Purified
Host	Mouse
Clonality	Monoclonal (mouse origin)
Isotype	Mouse IgG1, kappa
Clone Name	PGRF4-1
Purity	Protein G affinity chromatography
UniProt	P35226
Localization	Nuclear
Applications	Immunohistochemistry (FFPE) : 1-2ug/ml Prediluted IHC Only Format : incubate for 30 min at RT (1)
Limitations	This BMI1 antibody is available for research use only.



Western blot testing of human 293T lysate with BMI1 antibody (clone PGRF4-1).
Expected molecular weight: 37-43 kDa.



IHC testing of FFPE human colon carcinoma with BMI1 antibody (clone PGRF4-1).
HIER: boil tissue sections in pH 9 10mM Tris with 1mM EDTA for 10-20 min followed by cooling at RT for 20 min.

Description

The B cell-specific moloney murine leukemia virus integration site 1 (Bmi-1) is a transcriptional receptor of the polycomb gene family involved in several cellular processes including cell-cycle regulation, apoptosis, and maintenance of adult and neoplastic stem cells by providing self-renewal capacity. Further, Bmi-1 expression has been associated with malignant transformation, tumor progression, metastatic disease, and poor prognosis in human malignancies.

Additional studies involving polycomb-mediated transcriptional repression, stem cell renewal, and epigenetic regulation pathways may benefit from our [BMI1 antibody page](#) featuring clone BMI1/2823 with HuProt protein microarray specificity validation.

Application Notes

Optimal dilution of the BMI1 antibody should be determined by the researcher.

1. The prediluted format is supplied in a dropper bottle and is optimized for use in IHC. After epitope retrieval step (if required), drip mAb solution onto the tissue section and incubate at RT for 30 min.

Immunogen

A portion of amino acids 142-326 from the human protein was used as the immunogen for the BMI1 antibody.

Storage

Store the BMI1 antibody at 2-8oC (with azide) or aliquot and store at -20oC or colder (without azide).