

BMI1 Antibody [clone 282CT3.7.6] (F40283)

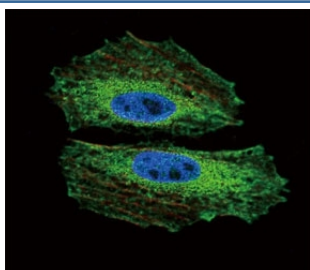
Catalog No.	Formulation	Size
F40283-0.4ML	In 1X PBS, pH 7.4, with 0.09% sodium azide	0.4 ml
F40283-0.08ML	In 1X PBS, pH 7.4, with 0.09% sodium azide	0.08 ml

[Bulk quote request](#)

Availability	1-3 business days
Species Reactivity	Human
Format	Purified
Host	Mouse
Clonality	Monoclonal (mouse origin)
Isotype	Mouse IgG1, k
Clone Name	282CT3.7.6
Purity	Purified
UniProt	P35226
Applications	Western Blot : 1:100-1:250 Immunofluorescence : 1:10-1:50
Limitations	This BMI1 antibody is available for research use only.

95
72
55
36
28

BMI1 antibody western blot analysis in K562 lysate. Predicted molecular weight: 37-43 kDa.



Confocal immunofluorescent analysis of BMI1 antibody with NCI-H460 cells followed by Alexa Fluor 488-conjugated goat anti-mouse IgG (green). Actin filaments have been labeled with Alexa Fluor 555 Phalloidin (red). DAPI was used as a nuclear counterstain (blue).

Description

BMI1 is a component of the Polycomb group (PcG) multiprotein PRC1 complex. In the PRC1 complex, it is required to stimulate the E3 ubiquitin-protein ligase activity of RNF2/RING2. [UniProt]

Application Notes

Titration of the BMI1 antibody may be required due to differences in protocols and secondary/substrate sensitivity.

Immunogen

This BMI1 antibody was produced from a mouse immunized with BMI1 recombinant protein.

Storage

Aliquot the BMI1 antibody and store frozen at -20oC or colder. Avoid repeated freeze-thaw cycles.