

## BMAL1 Antibody (RQ5563)

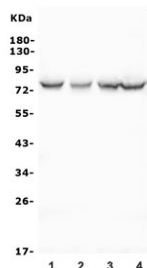
Catalog No.	Formulation	Size
RQ5563	0.5mg/ml if reconstituted with 0.2ml sterile DI water	100 ug

**Bulk quote request**

<b>Availability</b>	1-3 business days
<b>Species Reactivity</b>	Human, Mouse, Rat
<b>Format</b>	Antigen affinity purified
<b>Clonality</b>	Polyclonal (rabbit origin)
<b>Isotype</b>	Rabbit IgG
<b>Purity</b>	Affinity purified
<b>Buffer</b>	Lyophilized from 1X PBS with 2% Trehalose and 0.025% sodium azide
<b>UniProt</b>	O00327
<b>Applications</b>	Western Blot : 0.25-0.5ug/ml Direct ELISA : 0.1-0.5ug/ml
<b>Limitations</b>	This BMAL1 antibody is available for research use only.



Western blot testing of 1) rat heart and 2) mouse heart lysate with BMAL1 antibody. Predicted molecular weight ~69 kDa.



Western blot testing of human 1) U-2 OS, 2) ThP-1, 3) PC-3 and 4) K562 cell lysate with BMAL1 antibody. Predicted molecular weight ~69 kDa.

## Description

Aryl hydrocarbon receptor nuclear translocator-like protein 1 is protein that in humans is encoded by the ARNTL gene. The protein encoded by this gene is a basic helix-loop-helix protein that forms a heterodimer with CLOCK. This heterodimer binds E-box enhancer elements upstream of Period (PER1, PER2, PER3) and Cryptochrome (CRY1, CRY2) genes and activates transcription of these genes. PER and CRY proteins heterodimerize and repress their own transcription by interacting in a feedback loop with CLOCK/ARNTL complexes. Defects in this gene have been linked to infertility, problems with gluconeogenesis and lipogenesis, and altered sleep patterns. Several transcript variants encoding different isoforms have been found for this gene.

## Application Notes

Optimal dilution of the BMAL1 antibody should be determined by the researcher.

## Immunogen

A human recombinant protein (amino acids R116-E447) was used as the immunogen for the BMAL1 antibody.

## Storage

After reconstitution, the BMAL1 antibody can be stored for up to one month at 4oC. For long-term, aliquot and store at -20oC. Avoid repeated freezing and thawing.