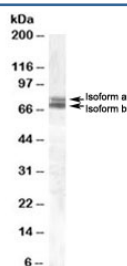


BMAL1 Antibody (R35591)

Catalog No.	Formulation	Size
R35591-100UG	0.5 mg/ml in 1X TBS, pH7.3, with 0.5% BSA (US sourced) and 0.02% sodium azide	100 ug

[Bulk quote request](#)

Availability	1-3 business days
Species Reactivity	Human
Predicted Reactivity	Cow, Dog, Mouse, Pig, Rat
Format	Antigen affinity purified
Host	Goat
Clonality	Polyclonal (goat origin)
Isotype	Goat Ig
Purity	Antigen affinity
Gene ID	406
Applications	Western Blot : 0.3-1ug/ml ELISA (peptide) LOD : 1:8000
Limitations	This BMAL1 antibody is available for research use only.



Western blot testing of human cerebellum lysate with BMAL1 antibody at 0.3ug/ml

Description

Additional name(s) for this target protein: Aryl hydrocarbon receptor nuclear translocator-like, ARNTL

Application Notes

Optimal dilution of the BMAL1 antibody should be determined by the researcher.

Immunogen

Amino acids REKITTNCYKFKIKD were used as the immunogen for this BMAL1 antibody.

Storage

Aliquot and store the BMAL1 antibody at -20oC.