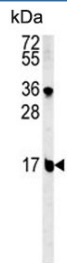


BLOC1S2 Antibody / BLOC-1 subunit 2 (F54828)

Catalog No.	Formulation	Size
F54828-0.4ML	In 1X PBS, pH 7.4, with 0.09% sodium azide	0.4 ml
F54828-0.08ML	In 1X PBS, pH 7.4, with 0.09% sodium azide	0.08 ml

[Bulk quote request](#)

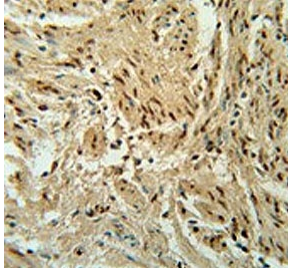
Availability	1-3 business days
Species Reactivity	Human, Mouse
Format	Purified
Host	Rabbit
Clonality	Polyclonal (rabbit origin)
Isotype	Rabbit Ig
Purity	Antigen affinity purified
UniProt	Q6QNY1
Applications	Flow Cytometry : 1:10-1:50 (1x10e6 cells) Immunohistochemistry (FFPE) : 1:50-1:100 Western Blot : 1:500-1:1000
Limitations	This BLOC1S2 antibody is available for research use only.



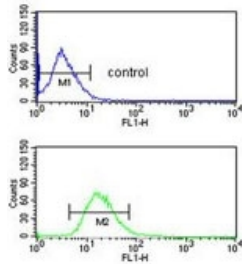
Western blot testing of mouse NIH 3T3 cell lysate with BLOC1S2 antibody. Predicted molecular weight ~16 kDa.



Western blot testing of human HepG2 cell lysate with BLOC1S2 antibody. Predicted molecular weight ~16 kDa.



IHC testing of FFPE human cervical carcinoma tissue with BLOC1S2 antibody. HIER: steam section in pH6 citrate buffer for 20 min and allow to cool prior to staining.



Flow cytometry testing of human HepG2 cells with BLOC1S2 antibody; Blue=isotype control, Green= BLOC1S2 antibody.

Description

BLOC1S2 is a component of the ubiquitously expressed BLOC1 multisubunit protein complex. BLOC1 is required for normal biogenesis of specialized organelles of the endosomal-lysosomal system, such as melanosomes and platelet dense granules (Starcevic and Dell'Angelica, 2004 [PubMed 15102850]).

Application Notes

The stated application concentrations are suggested starting points. Titration of the BLOC1S2 antibody may be required due to differences in protocols and secondary/substrate sensitivity.

Immunogen

A portion of amino acids 14-40 from the human protein was used as the immunogen for the BLOC1S2 antibody.

Storage

Aliquot the BLOC1S2 antibody and store frozen at -20oC or colder. Avoid repeated freeze-thaw cycles.