

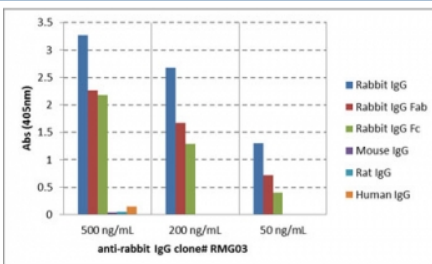
Biotinylated Rabbit IgG Antibody for ELISA [clone RMG03] (R20478BTN)

Catalog No.	Formulation	Size
R20478BTN-50UG	1 mg/ml in PBS with 50% glycerol, 1% BSA and 0.09% sodium azide	50 ug

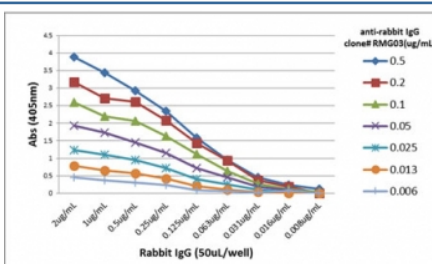
Recombinant **GOAT MONOCLONAL**

[Bulk quote request](#)

Availability	1-3 business days
Species Reactivity	Rabbit
Format	Biotin Conjugate
Host	Goat
Clonality	Recombinant Goat Monoclonal
Isotype	Goat IgG
Clone Name	RMG03
Purity	Protein A purified from animal origin-free supernatant
Applications	ELISA : 0.01ug/ml-0.5ug/ml Western Blot : 0.1ug/ml-0.5ug/ml
Limitations	This Biotinylated Rabbit IgG Antibody for ELISA is available for research use only.



ELISA of IgGs from different species shows recombinant Rabbit IgG antibody reacts to rabbit IgG; no cross reactivity with human IgG, rat IgG, or mouse IgG. The plate was coated with 50 ng/well of different IgG. 500 ng/mL, 200 ng/mL, or 50 ng/mL of RMG03 was used as the primary antibody. An alkaline phosphatase conjugated anti-goat IgG as the secondary antibody.



A titer ELISA of rabbit IgG. The plate was coated with different amounts of rabbit IgG. A serial dilution of the recombinant Rabbit IgG antibody was used as the primary antibody. An alkaline phosphatase conjugated anti-goat IgG as the secondary antibody.

Description

This antibody reacts to Rabbit IgG. No cross reactivity with human IgG, rat IgG, or mouse IgG.

Application Notes

The stated application concentrations are suggested starting points. Titration of the Biotinylated Rabbit IgG Antibody for ELISA may be required due to differences in protocols and secondary/substrate sensitivity.

Immunogen

Rabbit IgG was used as the immunogen for the recombinant biotinylated Rabbit IgG antibody.

Storage

Store the recombinant biotinylated Rabbit IgG antibody at -20oC.

Alternate Names

Anti-rabbit IgG ELISA antibody, Rabbit immunoglobulin G antibody, Rabbit IgG detection antibody, Goat anti-rabbit IgG antibody, Rabbit IgG immunoglobulin antibody