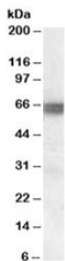


BIN1 Antibody (R35858)

Catalog No.	Formulation	Size
R35858-100UG	0.5 mg/ml in 1X TBS, pH7.3, with 0.5% BSA (US sourced) and 0.02% sodium azide	100 ug

[Bulk quote request](#)

Availability	1-3 business days
Species Reactivity	Human
Predicted Reactivity	Mouse, Rat, Dog, Pig, Cow
Format	Antigen affinity purified
Host	Goat
Clonality	Polyclonal (goat origin)
Isotype	Goat Ig
Purity	Antigen affinity
Gene ID	274
Applications	Western Blot : 0.1-0.3ug/ml ELISA (peptide) LOD : 1:1000
Limitations	This BIN1 antibody is available for research use only.



Western blot testing of human skeletal muscle lysate with BIN1 antibody at 0.1ug/ml. Expected molecular weight: 46-90 kDa (multiple isoforms).

Description

Additional name(s) for this target protein: Bridging integrator 1; Myc box-dependent-interacting protein 1

Application Notes

Optimal dilution of the BIN1 antibody should be determined by the researcher.

Immunogen

Amino acids SDNAPAKGNKSPS were used as the immunogen for this BIN1 antibody. This sequence is common to all 10 reported isoforms, ranging from 409-593 amino acids in length.

Storage

Aliquot and store the BIN1 antibody at -20oC.