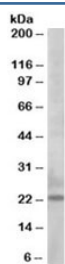


Bim Antibody / BCL2L11 (R34060)

Catalog No.	Formulation	Size
R34060-100UG	0.5 mg/ml in 1X TBS, pH7.3, with 0.5% BSA (US sourced) and 0.02% sodium azide	100 ug

[Bulk quote request](#)

Availability	1-3 business days
Species Reactivity	Human
Format	Antigen affinity purified
Clonality	Polyclonal (goat origin)
Isotype	Goat Ig
Purity	Antigen affinity
Gene ID	10018
Applications	Western Blot : 0.5-2ug/ml ELISA (peptide) LOD : 1:16000
Limitations	This Bim antibody is available for research use only.



Western blot testing of K562 lysate with Bim antibody at 0.5ug/ml. Predicted molecular weight: 12-22 kDa (three isoforms).

Description

Additional name(s) for this target protein: BCL2-like 11, BCL2L11; Bcl-2 interacting mediator of cell death

Application Notes

Optimal dilution of the Bim antibody should be determined by the researcher.

1. This BIM antibody will detect the alpha1/2/3 isoforms of the protein.

Immunogen

Amino acids FNAYYARRLEK were used as the immunogen for this Bim antibody.

Storage

Aliquot and store the Bim antibody at -20oC.