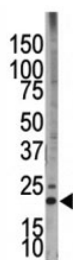


Bim Antibody / BCL2L11 (F42712)

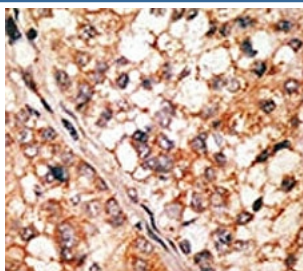
Catalog No.	Formulation	Size
F42712-0.4ML	In 1X PBS, pH 7.4, with 0.09% sodium azide	0.4 ml
F42712-0.08ML	In 1X PBS, pH 7.4, with 0.09% sodium azide	0.08 ml

[Bulk quote request](#)

Availability	1-3 business days
Species Reactivity	Human
Format	Purified
Host	Rabbit
Clonality	Polyclonal (rabbit origin)
Isotype	Rabbit Ig
Purity	Purified
UniProt	O43521
Applications	Western Blot : 1:1000 IHC (Paraffin) : 1:50-1:100
Limitations	This Bim antibody is available for research use only.



Western blot testing of Bim antibody and HL-60 cell lysate. Predicted molecular weight: 12-22 kDa (three isoforms).



IHC analysis of FFPE human hepatocarcinoma tissue stained with the Bim antibody

Description

Bim belongs to the BCL-2 protein family. BCL-2 family members form hetero- or homodimers and act as anti- or pro-apoptotic regulators that are involved in a wide variety of cellular activities. Bim contains a Bcl-2 homology domain 3 (BH3). It has been shown to interact with other members of the BCL-2 protein family, including BCL2, BCL2L1/BCL-X(L), and MCL1, and to act as an apoptotic activator. The expression of this gene can be induced by nerve growth factor (NGF), as well as by the forkhead transcription factor FKHR-L1, which suggests a role of this gene in neuronal and lymphocyte apoptosis. Transgenic studies of the mouse counterpart suggested that this gene functions as an essential initiator of apoptosis in thymocyte-negative selection.

Application Notes

Titration of the Bim antibody may be required due to differences in protocols and secondary/substrate sensitivity.

Immunogen

A portion of amino acids 130-165 from the human protein was used as the immunogen for this Bim antibody.

Storage

Aliquot the Bim antibody and store frozen at -20oC or colder. Avoid repeated freeze-thaw cycles.