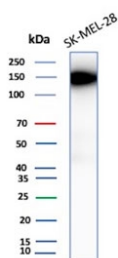


## Biliary glycoprotein 1 Antibody / BGP-1 / CEACAM1 [clone CEACAM1/12665] (V5794)

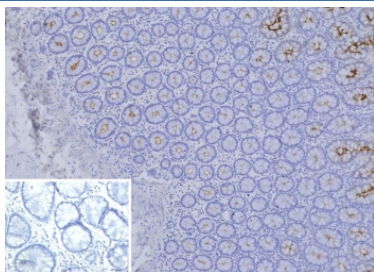
Catalog No.	Formulation	Size
V5794-100UG	0.2 mg/ml in 1X PBS with 0.1 mg/ml BSA (US sourced), 0.05% sodium azide	100 ug
V5794-20UG	0.2 mg/ml in 1X PBS with 0.1 mg/ml BSA (US sourced), 0.05% sodium azide	20 ug
V5794SAF-100UG	1 mg/ml in 1X PBS; BSA free, sodium azide free	100 ug

[Bulk quote request](#)

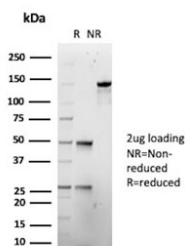
<b>Availability</b>	1-3 business days
<b>Species Reactivity</b>	Human
<b>Format</b>	Purified
<b>Clonality</b>	Monoclonal (mouse origin)
<b>Isotype</b>	Mouse IgG1, kappa
<b>Clone Name</b>	CEACAM1/12665
<b>Purity</b>	Protein G affinity
<b>UniProt</b>	P13688
<b>Localization</b>	Secreted, Cell membrane
<b>Applications</b>	Western Blot : 2-4ug/ml Immunohistochemistry (FFPE) : 1-2ug/ml
<b>Limitations</b>	This Biliary glycoprotein 1 antibody is available for research use only.



Western blot testing of human SK-MEL-28 cell lysate with Biliary glycoprotein 1 antibody (clone CEACAM1/12665). Predicted molecular weight ~58 kDa but may be observed at higher molecular weights due to heavy glycosylation.



IHC staining of FFPE human colon tissue with Biliary glycoprotein 1 antibody (clone CEACAM1/12665). Inset: PBS used in place of primary Ab (secondary Ab negative control). HIER: boil tissue sections in pH 9 10mM Tris with 1mM EDTA for 20 min and allow to cool before testing.



SDS-PAGE analysis of purified, BSA-free Biliary glycoprotein 1 antibody (clone CEACAM1/12665) as confirmation of integrity and purity.

## Description

Carcinoembryonic antigen (CEA) is one of the most commonly used tumor markers in serum immunoassay determinations of carcinoma. Members of the CEACAM (carcinoembryonic antigen-related cell adhesion molecule) family contain a single N domain, with structural homology to the immunoglobulin variable domains, followed by a variable number of immunoglobulin constantlike A and/or B domains. CEACAM1 (carcinoembryonic antigen-related cell adhesion molecule 1), also known as BGP or BGP1, is a 526 amino acid protein that exists as seven alternatively spliced isoforms, some of which localize to the cell membranes, while others are secreted. One of several members of the CEACAM family, CEACAM1 contains one Ig-like V-type domain and three Ig-like C2-type domains and is thought to play a role in a variety of cellular activities, including angiogenesis, apoptosis, arrangement of tissue threedimensional structure and modulation of innate and adaptive immune responses. Additionally, CEACAM1 is underexpressed in colorectal cancers, suggesting a role in tumor suppression.

## Application Notes

Optimal dilution of the Biliary glycoprotein 1 antibody should be determined by the researcher.

## Immunogen

A portion of amino acids 50-250 from human CEACAM1 protein was used as the immunogen for the Biliary glycoprotein 1 antibody.

## Storage

Aliquot the Biliary glycoprotein 1 antibody and store frozen at -20oC or colder. Avoid repeated freeze-thaw cycles.