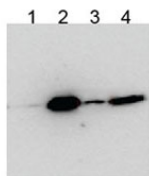


BICC1 Antibody (R35086)

Catalog No.	Formulation	Size
R35086-100UG	0.5 mg/ml in 1X TBS, pH7.3, with 0.5% BSA (US sourced) and 0.02% sodium azide	100 ug

[Bulk quote request](#)

Availability	1-3 business days
Species Reactivity	Human
Predicted Reactivity	Cow, Dog, Rat
Format	Antigen affinity purified
Host	Goat
Clonality	Polyclonal (goat origin)
Isotype	Goat Ig
Purity	Antigen affinity
Gene ID	80114
Applications	Immunoprecipitation : suitable (SDS improves the IP) ELISA (peptide) LOD : 1:8000
Limitations	This BICC1 antibody is available for research use only.



1. native, anti-BICC1 3. SDS, anti-BICC1
2. native, anti-FLAG 4. SDS, anti-FLAG

Western blot testing of HEK293 lysate overexpressing human BICC1-FLAG probed with an unrelated BCC1 antibody after immunoprecipitating with either cat # R35086 BICC1 antibody or FLAG antibody in the presence or absence of SDS.

Description

Additional name(s) for this target protein: Bicaudal C 1

Application Notes

Optimal dilution of the BICC1 antibody should be determined by the researcher.

Immunogen

Amino acids PNSPSIQHISQT were used as the immunogen for this BICC1 antibody.

Storage

Aliquot and store the BICC1 antibody at -20oC.