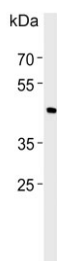


BHLHE41 Antibody / BHLH3 (F54419)

Catalog No.	Formulation	Size
F54419-0.4ML	In 1X PBS, pH 7.4, with 0.09% sodium azide	0.4 ml
F54419-0.08ML	In 1X PBS, pH 7.4, with 0.09% sodium azide	0.08 ml

[Bulk quote request](#)

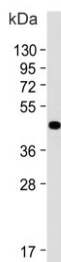
Availability	1-3 business days
Species Reactivity	Human, Mouse
Format	Purified
Clonality	Polyclonal (rabbit origin)
Isotype	Rabbit Ig
Purity	Antigen affinity purified
UniProt	Q9C0J9
Localization	Nuclear
Applications	Western Blot : 1:500-1:2000 Immunofluorescence : 1:25 Flow Cytometry : 1:25 (1x10 ⁶ cells)
Limitations	This BHLHE41 antibody is available for research use only.



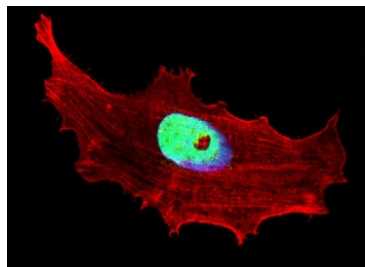
Western blot testing of human RD cell lysate with BHLHE41 antibody. Predicted molecular weight ~50 kDa.



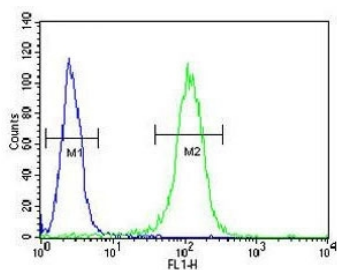
Western blot testing of human brain lysate with BHLHE41 antibody. Predicted molecular weight ~50 kDa.



Western blot testing of mouse brain lysate with BHLHE41 antibody. Predicted molecular weight ~50 kDa.



Immunofluorescent staining of fixed and permeabilized human MCF7 cells with BHLHE41 antibody (green), DAPI nuclear stain (blue) and anti-Actin (red).



Flow cytometry testing of human NCI-H460 cells with BHLHE41 antibody; Blue=isotype control, Green= BHLHE41 antibody.

Description

BHLHE41 may be a transcriptional repressor that represses both basal and activated transcription.

Application Notes

The stated application concentrations are suggested starting points. Titration of the BHLHE41 antibody may be required due to differences in protocols and secondary/substrate sensitivity.

Immunogen

A portion of amino acids 17-46 from the human protein was used as the immunogen for the BHLHE41 antibody.

Storage

Aliquot the BHLHE41 antibody and store frozen at -20oC or colder. Avoid repeated freeze-thaw cycles.