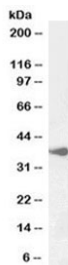


## BHLHE22 Antibody (R36464)

Catalog No.	Formulation	Size
R36464-100UG	0.5 mg/ml in 1X TBS, pH7.3, with 0.5% BSA (US sourced) and 0.02% sodium azide	100 ug

[Bulk quote request](#)

<b>Availability</b>	1-3 business days
<b>Species Reactivity</b>	Human, Pig
<b>Format</b>	Antigen affinity purified
<b>Host</b>	Goat
<b>Clonality</b>	Polyclonal (goat origin)
<b>Isotype</b>	Goat Ig
<b>Purity</b>	Antigen affinity
<b>UniProt</b>	Q8NFJ8
<b>Gene ID</b>	27319
<b>Applications</b>	Western Blot : 1-3ug/ml ELISA (peptide) LOD : 1:32000
<b>Limitations</b>	This BHLHE22 antibody is available for research use only.



Western blot testing of human cerebellum lysate with BHLHE22 antibody at 1ug/ml.  
Predicted molecular weight ~37 kDa.

### Description

Additional name(s) for this target protein: Basic helix-loop-helix family, member e22; bHLHb5; Trinucleotide repeat-containing gene 20 protein; TNRC20

### Application Notes

Optimal dilution of the BHLHE22 antibody should be determined by the researcher.

## **Immunogen**

Amino acids KYGESASRGSVAES were used as the immunogen for this BHLHE22 antibody.

## **Storage**

Aliquot and store the BHLHE22 antibody at -20oC.