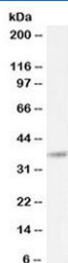


BHLHE22 Antibody (R36463)

Catalog No.	Formulation	Size
R36463-100UG	0.5 mg/ml in 1X TBS, pH7.3, with 0.5% BSA (US sourced) and 0.02% sodium azide	100 ug

Bulk quote request

Availability	1-3 business days
Species Reactivity	Human
Format	Antigen affinity purified
Host	Goat
Clonality	Polyclonal (goat origin)
Isotype	Goat Ig
Purity	Antigen affinity
UniProt	Q8NFJ8
Gene ID	27319
Applications	Western Blot : 0.1-0.3ug/ml ELISA (peptide) LOD : 1:128000
Limitations	This BHLHE22 antibody is available for research use only.



Western blot testing of human cerebellum lysate with BHLHE22 antibody at 0.1ug/ml.
Predicted molecular weight ~37 kDa.

Description

Additional name(s) for this target protein: Basic helix-loop-helix family, member e22; bHLHb5; Trinucleotide repeat-containing gene 20 protein; TNRC20

Application Notes

Optimal dilution of the BHLHE22 antibody should be determined by the researcher.

Immunogen

Amino acids HKSLSASTSKRLE were used as the immunogen for this BHLHE22 antibody.

Storage

Aliquot and store the BHLHE22 antibody at -20oC.