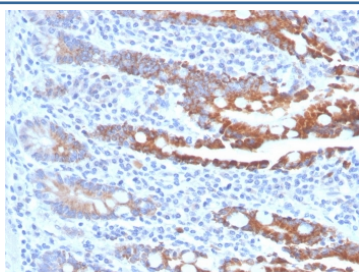


BGP-1 Antibody / CEACAM1 [clone CEACAM1/4843] (V4632)

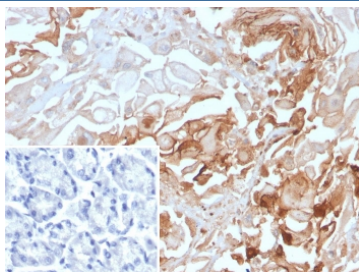
Catalog No.	Formulation	Size
V4632-100UG	0.2 mg/ml in 1X PBS with 0.1 mg/ml BSA (US sourced), 0.05% sodium azide	100 ug
V4632-20UG	0.2 mg/ml in 1X PBS with 0.1 mg/ml BSA (US sourced), 0.05% sodium azide	20 ug
V4632SAF-100UG	1 mg/ml in 1X PBS; BSA free, sodium azide free	100 ug

[Bulk quote request](#)

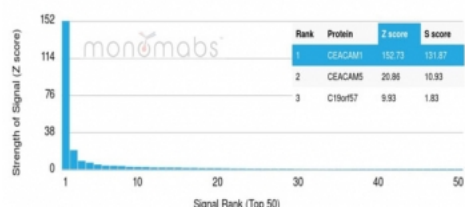
Availability	1-3 business days
Species Reactivity	Human
Format	Purified
Clonality	Monoclonal (mouse origin)
Isotype	Mouse IgG2a, kappa
Clone Name	CEACAM1/4843
Purity	Protein A/G affinity
UniProt	P13688
Localization	Secreted, Cell membrane
Applications	Immunohistochemistry (FFPE) : 1-2ug/ml for 30 min at RT
Limitations	This BGP-1 antibody is available for research use only.



IHC staining of FFPE human small intestine tissue with BGP-1 antibody (clone CEACAM1/4843). HIER: boil tissue sections in pH 9 10mM Tris with 1mM EDTA for 20 min and allow to cool before testing.



IHC staining of FFPE human stomach tissue with BGP-1 antibody (clone CEACAM1/4843). Inset: PBS used in place of primary Ab (secondary Ab negative control). HIER: boil tissue sections in pH 9 10mM Tris with 1mM EDTA for 20 min and allow to cool before testing.



Analysis of a HuProt(TM) microarray containing more than 19,000 full-length human proteins using BGP-1 antibody (clone CEACAM1/4843). Z- and S- Score: The Z-score represents the strength of a signal that a monoclonal antibody (in combination with a fluorescently-tagged anti-IgG secondary antibody) produces when binding to a particular protein on the HuProt(TM) array. Z-scores are described in units of standard deviations (SD's) above the mean value of all signals generated on that array. If targets on HuProt(TM) are arranged in descending order of the Z-score, the S-score is the difference (also in units of SD's) between the Z-score. S-score therefore represents the relative target specificity of a mAb to its intended target. A mAb is considered to specific to its intended target, if the mAb has an S-score of at least 2.5. For example, if a mAb binds to protein X with a Z-score of 43 and to protein Y with a Z-score of 14, then the S-score for the binding of that mAb to protein X is equal to 29.

Description

Carcinoembryonic antigen (CEA) is one of the most commonly used tumor markers in serum immunoassay determinations of carcinoma. Members of the CEACAM (carcinoembryonic antigen-related cell adhesion molecule) family contain a single N domain, with structural homology to the immunoglobulin variable domains, followed by a variable number of immunoglobulin constant-like A and/or B domains. CEACAM1 (carcinoembryonic antigen-related cell adhesion molecule 1), also known as BGP or BGP1 (Biliary glycoprotein 1), is a 526 amino acid protein that exists as seven alternatively spliced isoforms, some of which localize to the cell membranes, while others are secreted. One of several members of the CEACAM family, CEACAM1 contains one Ig-like V-type domain and three Ig-like C2-type domains and is thought to play a role in a variety of cellular activities, including angiogenesis, apoptosis, arrangement of tissue three dimensional structure and modulation of innate and adaptive immune responses. Additionally, CEACAM1 is under-expressed in colorectal cancers, suggesting a role in tumor suppression.

Application Notes

Optimal dilution of the BGP-1 antibody should be determined by the researcher.

Immunogen

A recombinant partial protein sequence (within amino acids 50-250) from the human protein was used as the immunogen for the BGP-1 antibody.

Storage

Aliquot the BGP-1 antibody and store frozen at -20oC or colder. Avoid repeated freeze-thaw cycles.

