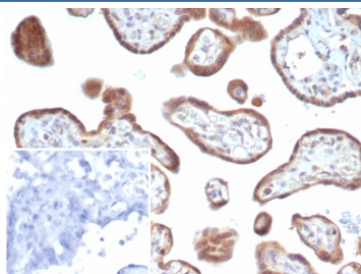


## bFGF Antibody / Basic FGF / FGF2 [clone FGF2/7364] (V5062)

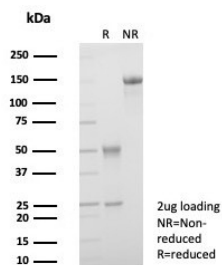
Catalog No.	Formulation	Size
V5062-100UG	0.2 mg/ml in 1X PBS with 0.1 mg/ml BSA (US sourced), 0.05% sodium azide	100 ug
V5062-20UG	0.2 mg/ml in 1X PBS with 0.1 mg/ml BSA (US sourced), 0.05% sodium azide	20 ug
V5062SAF-100UG	1 mg/ml in 1X PBS; BSA free, sodium azide free	100 ug

[Bulk quote request](#)

<b>Availability</b>	1-3 business days
<b>Species Reactivity</b>	Human
<b>Format</b>	Purified
<b>Host</b>	Mouse
<b>Clonality</b>	Monoclonal (mouse origin)
<b>Isotype</b>	Mouse IgG2, kappa
<b>Clone Name</b>	FGF2/7364
<b>Purity</b>	Protein A/G affinity
<b>UniProt</b>	P09038
<b>Localization</b>	Nucleus, Cytoplasm
<b>Applications</b>	Immunohistochemistry (FFPE) : 1-2ug/ml for 30 min at RT
<b>Limitations</b>	This bFGF antibody is available for research use only.



IHC staining of FFPE human placental tissue with bFGF antibody (clone FGF2/7364). Inset: PBS used in place of primary Ab (secondary Ab negative control). HIER: boil tissue sections in pH 9 10mM Tris with 1mM EDTA for 20 min and allow to cool before testing.



SDS-PAGE analysis of purified, BSA-free bFGF antibody (clone FGF2/7364) as confirmation of integrity and purity.

## Description

Fibroblast growth factor-1 (FGF-1), also designated acidic FGF, and fibroblast growth factor-2 (FGF-2), also designated basic FGF, are members of a family of growth factors that stimulate proliferation of cells of mesenchymal, epithelial and neuroectodermal origin. Additional members of the FGF family include the oncogenes FGF-3 (Int2) and FGF-4 (hst/Kaposi), FGF-5, FGF-6, FGF-7 (KGF), FGF-8 (AIGF), FGF-9 (GAF) and FGF-10-FGF-23. Members of the FGF family share 30-55% amino acid sequence identity and similar gene structure, and are capable of transforming cultured cells when overexpressed in transfected cells. Cellular receptors for FGFs are members of a second multigene family including four tyrosine kinases, designated Flg (FGFR-1), Bek (FGFR-L), TKF and FGFR-3.

## Application Notes

Optimal dilution of the bFGF antibody should be determined by the researcher.

## Immunogen

A recombinant partial protein sequence (within amino acids 7-96) from the human protein was used as the immunogen for the bFGF antibody.

## Storage

Aliquot the bFGF antibody and store frozen at -20°C or colder. Avoid repeated freeze-thaw cycles.