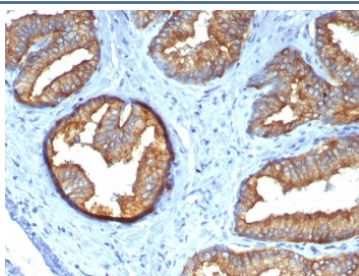


Beta Tubulin Antibody [clone TUBB/4470] (V4450)

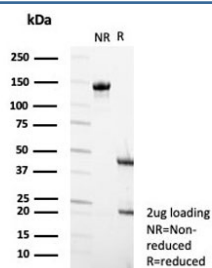
Catalog No.	Formulation	Size
V4450-100UG	0.2 mg/ml in 1X PBS with 0.1 mg/ml BSA (US sourced), 0.05% sodium azide	100 ug
V4450-20UG	0.2 mg/ml in 1X PBS with 0.1 mg/ml BSA (US sourced), 0.05% sodium azide	20 ug
V4450SAF-100UG	1 mg/ml in 1X PBS; BSA free, sodium azide free	100 ug

[Bulk quote request](#)

Availability	1-3 business days
Species Reactivity	Human
Format	Purified
Host	Mouse
Clonality	Monoclonal (mouse origin)
Isotype	Mouse IgG2b, kappa
Clone Name	TUBB/4470
Purity	Protein A/G affinity
UniProt	P07437
Localization	Cytoplasm
Applications	Immunohistochemistry (FFPE) : 1-2ug/ml for 30 min at RT
Limitations	This Beta Tubulin antibody is available for research use only.



IHC staining of FFPE prostate tissue with Beta Tubulin antibody (clone TUBB/4470).
HIER: boil tissue sections in pH 9 10mM Tris with 1mM EDTA for 20 min and allow to cool before testing.



SDS-PAGE analysis of purified, BSA-free Beta Tubulin antibody (clone TUBB/4470) as confirmation of integrity and purity.

Description

Tubulin is the major constituent of microtubules. It binds two moles of GTP, one at an exchangeable site on the beta chain and one at a non-exchangeable site on the alpha chain. Ubiquitously expressed with highest levels in spleen, thymus and immature brain.

Application Notes

Optimal dilution of the Beta Tubulin antibody should be determined by the researcher.

Immunogen

Recombinant full-length human protein was used as the immunogen for the Beta Tubulin antibody.

Storage

Aliquot the Beta Tubulin antibody and store frozen at -20°C or colder. Avoid repeated freeze-thaw cycles.