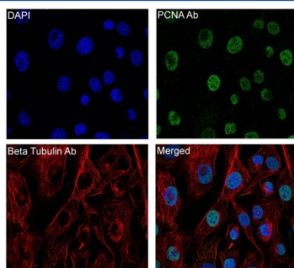


Beta Tubulin Antibody / TUBB [clone BI-20] (RQ5179)

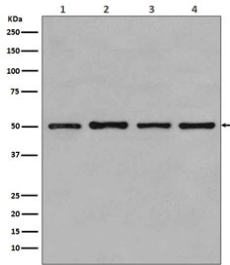
Catalog No.	Formulation	Size
RQ5179	Antibody in PBS with 0.02% sodium azide, 50% glycerol and 0.4-0.5mg/ml BSA	100 ul

[Bulk quote request](#)

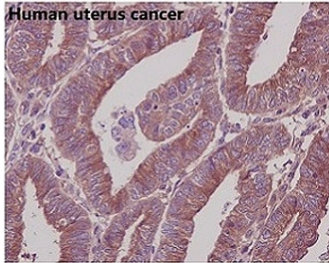
Availability	1-2 weeks
Species Reactivity	Human, Mouse, Rat
Format	Purified
Host	Rabbit
Clonality	Rabbit Monoclonal
Isotype	Rabbit IgG
Clone Name	BI-20
Purity	Affinity purified
UniProt	P07437
Applications	Western Blot : 1:3000-1:10000 Immunohistochemistry (FFPE) : 1:50-1:200 Immunofluorescence/Immunocytochemistry : 1:50-1:200
Limitations	This Beta Tubulin antibody is available for research use only.



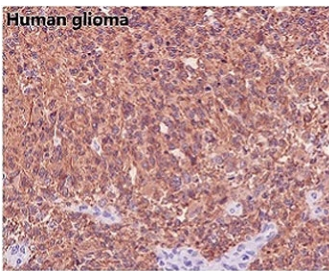
IF/ICC staining of mouse NIH3T3 cells with Beta Tubulin antibody (red), PCNA antibody (green) and DAPI nuclear stain (blue).



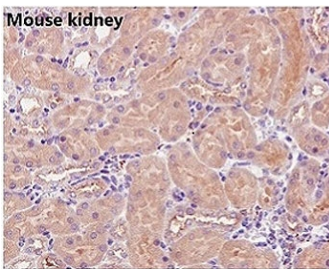
Western blot testing of 1) human MCF7, 2) monkey COS-1, 3) human Jurkat and 4) human HeLa lysate with Beta Tubulin antibody. Predicted molecular weight: 50-55 kDa.



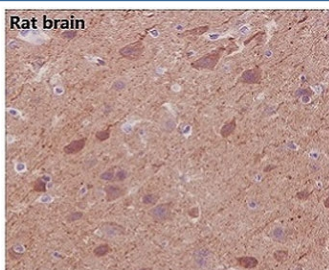
IHC staining of FFPE human uterine cancer with Beta Tubulin antibody. HIER: boil tissue sections in pH6, 10mM citrate buffer, for 10-20 min and allow to cool before testing.



IHC staining of FFPE human glioma with Beta Tubulin antibody. HIER: boil tissue sections in pH6, 10mM citrate buffer, for 10-20 min and allow to cool before testing.



IHC staining of FFPE mouse kidney with Beta Tubulin antibody. HIER: boil tissue sections in pH6, 10mM citrate buffer, for 10-20 min and allow to cool before testing.



IHC staining of FFPE rat brain with Beta Tubulin antibody. HIER: boil tissue sections in pH6, 10mM citrate buffer, for 10-20 min and allow to cool before testing.

Description

The TUBB gene encodes a beta tubulin protein. This protein forms a dimer with alpha tubulin and acts as a structural component of microtubules. Mutations in this gene cause cortical dysplasia, complex, with other brain malformations 6. Alternative splicing results in multiple splice variants. There are multiple pseudogenes for this gene on chromosomes 1, 6, 7, 8, 9, and 13. [RefSeq]

Application Notes

Optimal dilution of the Beta Tubulin antibody should be determined by the researcher.

Immunogen

A synthetic peptide specific to human Beta Tubulin / TUBB was used as the immunogen for the Beta Tubulin antibody.

Storage

Store the Beta Tubulin antibody at -20oC.