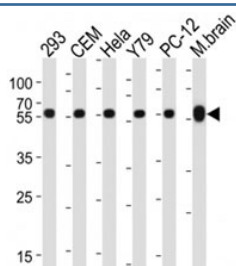


## Beta-Tubulin Antibody (TUBB) [clone 87CT59.3.7] (F40189)

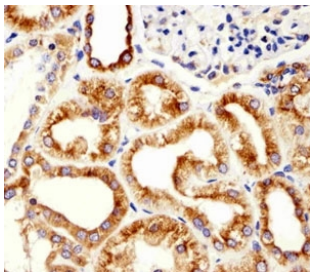
Catalog No.	Formulation	Size
F40189-0.4ML	In 1X PBS, pH 7.4, with 0.09% sodium azide	0.4 ml
F40189-0.08ML	In 1X PBS, pH 7.4, with 0.09% sodium azide	0.08 ml

[Bulk quote request](#)

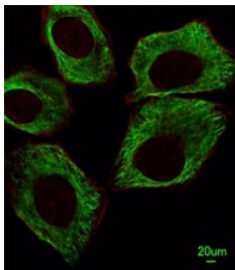
<b>Availability</b>	1-3 business days
<b>Species Reactivity</b>	Human, Mouse, Rat
<b>Predicted Reactivity</b>	Bovine, Chicken, Hamster, Pig, Rat, Xenopus
<b>Format</b>	Purified
<b>Host</b>	Mouse
<b>Clonality</b>	Monoclonal (mouse origin)
<b>Isotype</b>	Mouse IgG2b, k
<b>Clone Name</b>	87CT59.3.7
<b>Purity</b>	Purified
<b>UniProt</b>	P07437
<b>Applications</b>	Western Blot : 1:1000 Immunofluorescence : 1:25 IHC (Paraffin) : 1:10-1:50
<b>Limitations</b>	This beta-Tubulin antibody is available for research use only.



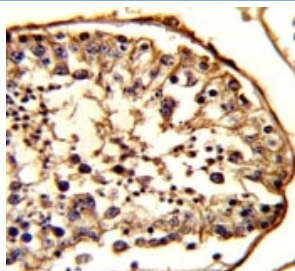
Western blot analysis of lysate from 293, CEM, HeLa, Y79, rat PC-12 cell line, mouse brain tissue lysate using TUBB / beta-Tubulin antibody at 1:1000 for each lane.



Immunohistochemical analysis of paraffin-embedded human kidney using beta-Tubulin antibody at 1:25 dilution.



Immunofluorescent analysis of A549 cells using beta-Tubulin antibody at 1:25 dilution. Dylight Fluor 488-conjugated goat anti-mouse IgG was used as the secondary Ab (green). Cytoplasmic actin was counterstained with Dylight 554 (red) conjugated Phalloidin (red).



IHC analysis of FFPE human testis stained with beta-Tubulin antibody

## Description

Tubulin is the major constituent of microtubules. It binds two moles of GTP, one at an exchangeable site on the beta chain and one at a non-exchangeable site on the alpha chain.

## Application Notes

Titration of the beta-Tubulin antibody may be required due to differences in protocols and secondary/substrate sensitivity.

## Immunogen

Tubulin beta chain recombinant protein was used to produce this beta-Tubulin antibody.

## Storage

Aliquot the beta-Tubulin antibody and store frozen at -20°C or colder. Avoid repeated freeze-thaw cycles.