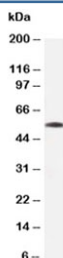


Beta Tubulin Antibody [clone TUB 2.1] (R30098)

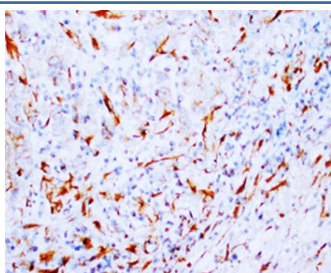
Catalog No.	Formulation	Size
R30098	0.5mg/ml with 1% BSA and 0.01% sodium azide if reconstituted with 0.2ml sterile 1X PBS	100 ug

[Bulk quote request](#)

Availability	1-3 business days
Species Reactivity	Human, Mouse, Rat
Format	Ascites
Clonality	Monoclonal (mouse origin)
Isotype	Mouse IgG1
Clone Name	TUB 2.1
Purity	Unpurified ascites
UniProt	P07437
Localization	Cytoplasmic
Applications	Western Blot : 2ug/ml IHC (FFPE) : 0.5-1ug/ml
Limitations	This Beta Tubulin antibody is available for research use only.



Western blot testing of Beta Tubulin antibody and rat skeletal muscle tissue lysate.
Predicted molecular weight: 50-55 kDa.



IHC-P: beta-Tubulin antibody testing of human breast cancer tissue

Description

Beta tubulin (TUBB) was derived from its corresponding mRNA with a molecular weight of about 55,000. The TUBB gene contains 4 exons and located in the HLA class I region at 6p21.3. Paclitaxel resistance in non-small-cell lung cancer is associated with beta tubulin gene mutations.

Application Notes

Titration of the Beta Tubulin antibody may be required due to differences in protocols and secondary/substrate sensitivity.

Immunogen

Tubulin from rat brain was used as the immunogen for this Beta Tubulin antibody.

Storage

Store the lyophilized Beta Tubulin antibody at 4oC. After reconstitution, aliquot and store at -20oC. Avoid repeated freezing and thawing.