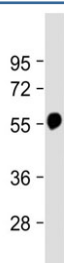


## Beta Tubulin Antibody (F54148)

Catalog No.	Formulation	Size
F54148-0.2ML	In 1X PBS, pH 7.4, with 0.09% sodium azide	0.2 ml
F54148-0.05ML	In 1X PBS, pH 7.4, with 0.09% sodium azide	0.05 ml

[Bulk quote request](#)

<b>Availability</b>	1-3 business days
<b>Species Reactivity</b>	Mouse
<b>Predicted Reactivity</b>	Bovine, C. elegans, Chicken, Drosophila, Hamster, Human, Primate, Rat, Xenopus
<b>Format</b>	Antigen affinity purified
<b>Host</b>	Rabbit
<b>Clonality</b>	Polyclonal (rabbit origin)
<b>Isotype</b>	Rabbit Ig
<b>Purity</b>	Antigen affinity
<b>UniProt</b>	P99024
<b>Applications</b>	Western Blot : 1:1000-1:2000
<b>Limitations</b>	This Beta Tubulin antibody is available for research use only.



Western blot testing of mouse brain lysate with Beta Tubulin antibody at 1:2000.  
Predicted molecular weight: 50-55 kDa.

## Description

Tubulin is the major constituent of microtubules. It binds two moles of GTP, one at an exchangeable site on the beta chain and one at a non-exchangeable site on the alpha chain.

## Application Notes

The stated application concentrations are suggested starting points. Titration of the Beta Tubulin antibody may be

required due to differences in protocols and secondary/substrate sensitivity.

## **Immunogen**

A portion of amino acids 298-328 from mouse Beta Tubulin was used as the immunogen for the Beta Tubulin antibody.

## **Storage**

Aliquot the Beta Tubulin antibody and store frozen at -20oC or colder. Avoid repeated freeze-thaw cycles.