

## Beta-secretase 1 Antibody / Memapsin-2 / BACE1C (F54840)

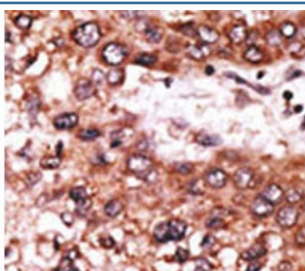
| Catalog No.   | Formulation                                | Size    |
|---------------|--|---------|
| F54840-0.4ML  | In 1X PBS, pH 7.4, with 0.09% sodium azide | 0.4 ml  |
| F54840-0.08ML | In 1X PBS, pH 7.4, with 0.09% sodium azide | 0.08 ml |

**Bulk quote request**

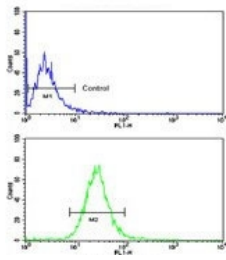
|                           |  |
|---------------------------|--|
| <b>Availability</b>       | 1-3 business days  |
| <b>Species Reactivity</b> | Human  |
| <b>Format</b>             | Purified   |
| <b>Clonality</b>          | Polyclonal (rabbit origin)   |
| <b>Isotype</b>            | Rabbit Ig  |
| <b>Purity</b>             | Purified   |
| <b>UniProt</b>            | P56817   |
| <b>Localization</b>       | Cytoplasmic  |
| <b>Applications</b>       | Immunohistochemistry (FFPE) : 1:50-1:100<br>Flow Cytometry : 1:10-1:50 (1x10e6 cells)<br>Western Blot : 1:500-1:1000 |
| <b>Limitations</b>        | This Beta-secretase 1 antibody is available for research use only.   |

kDa  
95  
72  
55  
36  
28  
17

Western blot testing of human NCI-H460 cell lysate with Beta-secretase 1 antibody.  
Predicted molecular weight ~56 kDa.



IHC testing of FFPE human cancer tissue with Beta-secretase 1 antibody. HIER: steam section in pH6 citrate buffer for 20 min and allow to cool prior to staining.



Flow cytometry testing of human NCI-H460 cells with Beta-secretase 1 antibody;  
Blue=isotype control, Green= Beta-secretase 1 antibody.

## Description

Cerebral deposition of amyloid beta peptide is an early and critical feature of Alzheimer's disease. Amyloid beta peptide is generated by proteolytic cleavage of amyloid precursor protein (APP) by two proteases, one of which is the BACE1. The encoded protein, a member of the peptidase A1 protein family, is a type I integral membrane glycoprotein and aspartic protease that is found mainly in the Golgi.

## Application Notes

The stated application concentrations are suggested starting points. Titration of the Beta-secretase 1 antibody may be required due to differences in protocols and secondary/substrate sensitivity.

## Immunogen

A portion of amino acids 125-154 from the human protein was used as the immunogen for the Beta-secretase 1 antibody.

## Storage

Aliquot the Beta-secretase 1 antibody and store frozen at -20oC or colder. Avoid repeated freeze-thaw cycles.