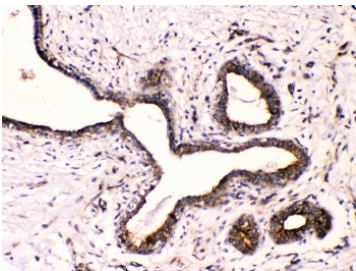


## Beta III Tubulin Antibody (R32611)

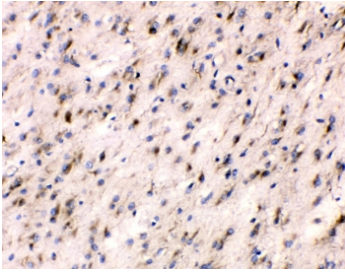
Catalog No.	Formulation	Size
R32611	0.5mg/ml if reconstituted with 0.2ml sterile DI water	100 ug

### Bulk quote request

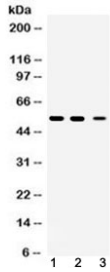
<b>Availability</b>	1-3 business days
<b>Species Reactivity</b>	Human, Mouse, Rat
<b>Format</b>	Antigen affinity purified
<b>Host</b>	Rabbit
<b>Clonality</b>	Polyclonal (rabbit origin)
<b>Isotype</b>	Rabbit IgG
<b>Purity</b>	Antigen affinity
<b>Buffer</b>	Lyophilized from 1X PBS with 2.5% BSA and 0.025% sodium azide
<b>UniProt</b>	Q13509
<b>Localization</b>	Cytoplasmic
<b>Applications</b>	Western Blot : 0.5-1ug/ml Immunohistochemistry (FFPE) : 1-2ug/ml Flow Cytometry : 1-3ug/million cells
<b>Limitations</b>	This Beta III Tubulin antibody is available for research use only.



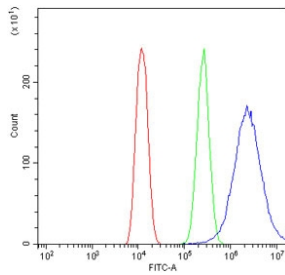
IHC testing of FFPE human breast cancer with Beta III Tubulin antibody at 1ug/ml. HIER: steam section in pH6 citrate buffer for 20 min.



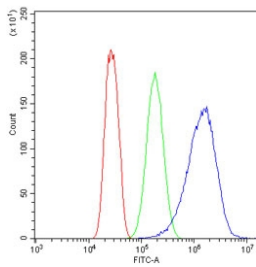
IHC testing of FFPE human glioma with Beta III Tubulin antibody at 1ug/ml. HIER: steam section in pH6 citrate buffer for 20 min.



Western blot testing of 1) rat brain, 2) mouse brain and 3) human HeLa lysate with Beta III Tubulin antibody at 0.5ug/ml. Predicted molecular weight ~50 kDa.



Flow cytometry testing of human U-2 OS cells with Beta III Tubulin antibody at 1ug/million cells (blocked with goat sera); Red=cells alone, Green=isotype control, Blue= Beta III Tubulin antibody.



Flow cytometry testing of human SiHa cells with Beta III Tubulin antibody at 1ug/million cells (blocked with goat sera); Red=cells alone, Green=isotype control, Blue= Beta III Tubulin antibody.

## Description

Tubulin beta-3 chain is a protein that in humans is encoded by the TUBB3 gene. This gene encodes a class III member of the beta tubulin protein family. Beta tubulins are one of two core protein families (alpha and beta tubulins) that heterodimerize and assemble to form microtubules. This protein is primarily expressed in neurons and may be involved in neurogenesis and axon guidance and maintenance. Mutations in this gene are the cause of congenital fibrosis of the extraocular muscles type 3. Alternate splicing results in multiple transcript variants. A pseudogene of this gene is found on chromosome 6.

## Application Notes

Optimal dilution of the Beta III Tubulin antibody should be determined by the researcher.

## Immunogen

Amino acids 383-412 (EQFTAMFRRKAFHLHWYTGEGMDEMEFTEAE-human) were used as the immunogen for the Beta III Tubulin antibody.

## Storage

After reconstitution, the Beta III Tubulin antibody can be stored for up to one month at 4°C. For long-term, aliquot and store at -20°C. Avoid repeated freezing and thawing.