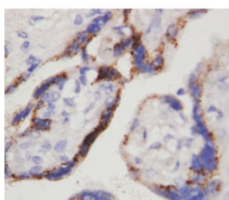


beta-HCG Antibody [clone PC-2] (R30097)

Catalog No.	Formulation	Size
R30097	0.5mg/ml with 1% BSA and 0.01% sodium azide if reconstituted with 0.2ml sterile 1X PBS	100 ug

Bulk quote request

Availability	1-3 business days
Species Reactivity	Human
Format	Ascites
Clonality	Monoclonal (mouse origin)
Isotype	Mouse IgG1
Clone Name	PC-2
Purity	Ascites
Gene ID	1082
Applications	IHC (FFPE) : 2ug/ml
Limitations	This beta-HCG antibody is available for research use only.



IHC-P: beta-HCG antibody testing of human placenta tissue. HIER: steamed with pH6 citrate buffer, HRP-staining.

Description

beta-HCG(beta-Human Chorionic Gonadotropin), also termed as Chorionic Gonadotropin, Beta Chain(CGB). It is encoded by a multigene cluster composed of six homologous sequences. And in the family of beta-containing glycoprotein hormones, beta-HCG is unique in that it contains an extension of 29 amino acids at its COOH end. beta-HCG is mapped to 19q13.32 and expressed in trophoblast and various malignant tumors promotes cellular motility in vivo. beta-HCG has a novel function in uterine adaptation to early pregnancy as well as in tumor development and underline the importance of HCG as an as yet unrecognized angiogenic factor.

Application Notes

The stated application concentrations are suggested starting amounts. Titration of the beta-HCG antibody may be required due to differences in protocols and secondary/substrate sensitivity.

Immunogen

Purified human Chorionic Gonadotropin was used as the immunogen for this beta-HCG antibody.

Storage

After reconstitution, the beta-HCG antibody can be stored for up to one month at 4°C. For long-term, aliquot and store at -20°C. Avoid repeated freezing and thawing.